

9 Ton Heavy Duty Hydraulic Winch 18000 lbs.



Key features

- Heavy-Duty Capacity: Capable of Pulling up to 9 tons (18,000 lbs) for demanding applications.
- Hydraulic Operation: Utilizes hydraulic power for smooth and efficient performance.
- Versatile Application: Suitable for a variety of industrial, commercial, and off-road tasks.
- 3 Year Warranty, Customer Support and Service in the USA

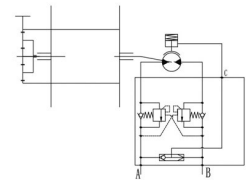
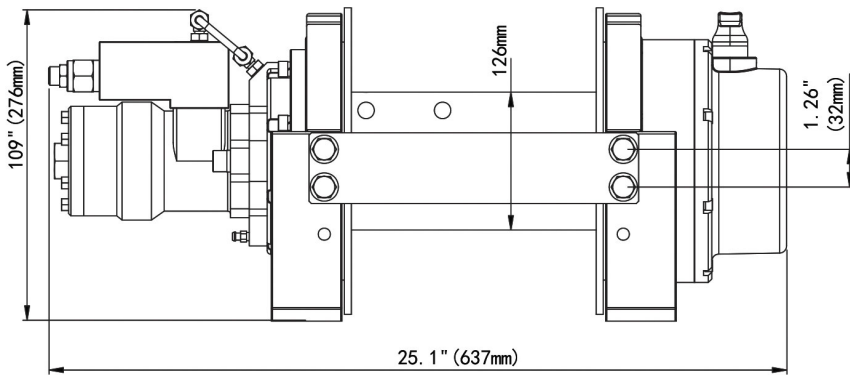
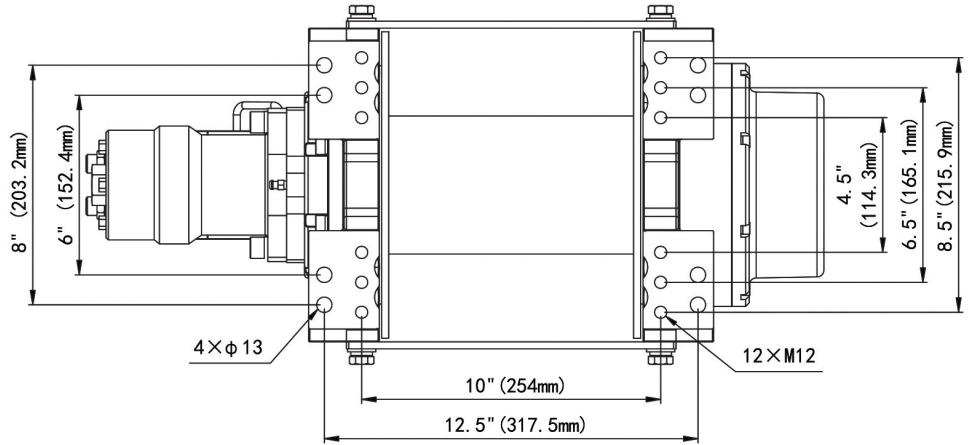
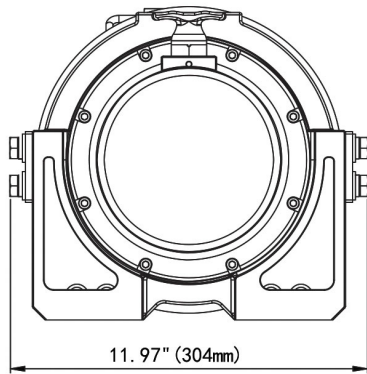
Winch Description

This 9 Ton Hydraulic Winch, a powerhouse with exceptional features. With a robust 18,000-lb. rated line pull, it effortlessly tackles heavy-duty tasks. Equipped with a reliable disk brake, it ensures safe and controlled operation. The winch boasts an impressive IP67 Rating, making it resistant to dust and water. Its 2-stage planetary gear train system, featuring a 23:1 gear ratio, provides superior strength and efficiency. Conquer any challenge with this reliable and high-performance hydraulic winch.

Technical Specifications

1st Layer Rated Capacity	18000 lb / 8165 kg	Free Spooling Clutch Type	Manual
Speed (f/m) / min	23 - 37 ft/min / 7-11.2 m/min	Recommended Wire Rope	ø9/16 in x98 ft ø14 mm x 30 m
Number of Speeds	Variable Speed	Standards Compliance	SAE-J706
Motor Type (68)	Hydraulic	Warranty	3 Year
IEC Motor Protection	IP67	Oil Pressure	2320 psi [16 Mpa]
Transmission / Reducer Type	2 Stages Planetary / 2 Etapas Planetario	Oil Flow	60 l/min [15.8 gal/min]
Gear Ratio	17.3 : 1		

PWYH18000



Rope Layers Capa de Cable	1	2	3	4
Line Pull (lb)	18000	15000	12857	11250
Capacidad (Kg)	8172	6810	5837	5108
Line Speed (ft/min)	23	27.6	32.8	36.7
Velocidad (m/min)	7	8.4	10	11.2

- NOTE:**
1. Recommended oil flow supply range is 35-75 l/min.
 2. Dual balance valves as standard, winch must be used in Independent oil supply system which with relief valve.
 3. Relief valve can be selected from the valve block selection table as optional.

- WARNING:**
1. The winch will never be used for hoisting people or hoisting objects above people.
 2. Do not use clutch under load.
 3. Do not equip winch into oil supply system which without relief valve.

Unit Weight & Dimensions

A Total Height	10.9 in
W Width	25 in
D Depth	12 in
Total Unit Weight	154 lbs / 70 Kg

Packaging Weight & Dimensions

Package 1 Net Weight	154 lbs / 70 Kg
Package 1 Width	18 in / 45.72 cm
Package 1 Gross Weight	167 lbs / 76 Kg
Package 1 Height	16 in / 40.64 cm
Package 1 Length	32 in / 81.28 cm