



110000 lbs. 50 Tons Hydraulic Winch EATON motor

Key features

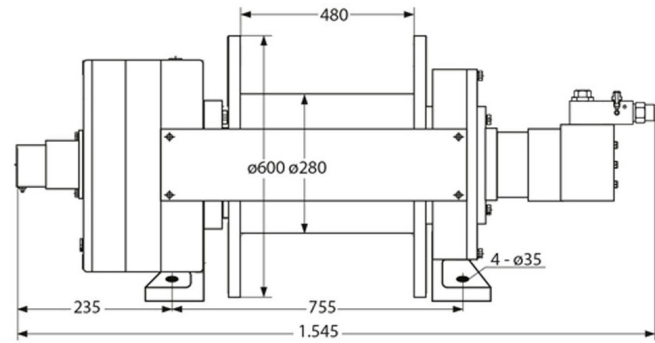
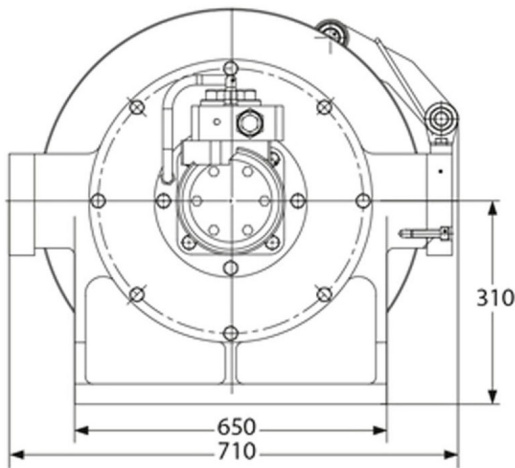
- High Capacity: Capable of lifting up to 110,000 lbs (50 tons) for extremely heavy-duty tasks.
- Hydraulic Operation: Provides smooth, efficient, and dependable operation with hydraulic power.
- Versatile Application: Suitable for a wide range of industrial, commercial, and extreme off-road uses.
- 3 Year Warranty, Customer Support and Service in the USA

Winch Description

This powerful 50 Ton Hydraulic Winch boasts a robust 110,000 lbs lifting capacity and is equipped with a high-performance EATON motor. Designed for the most demanding heavy-duty applications, it provides superior strength, durability, and reliability for lifting and pulling in the toughest conditions.

Technical Specifications

1st Layer Rated Capacity	110231 lb / 50000 kg	Recommended Wire Rope	ø1 1/2 in x 213 ft ø36 mm x 65 m
Speed (f/m) / min	7 ft / 2 m	Standards Compliance	SAE-J706
Number of Speeds	1 Speed	Warranty	3 Year
Motor Type (68)	EATON 6K-245	Oil Pressure	170 bar / 2465 psi
IEC Motor Protection	IP67	Oil Flow	31 gpm / 117 l/min



Dimensions in mm / Dimensiones en mm