



25 Tons Hydraulic Winch with Two automatic Brakes and Spooler Fairlead

Key features

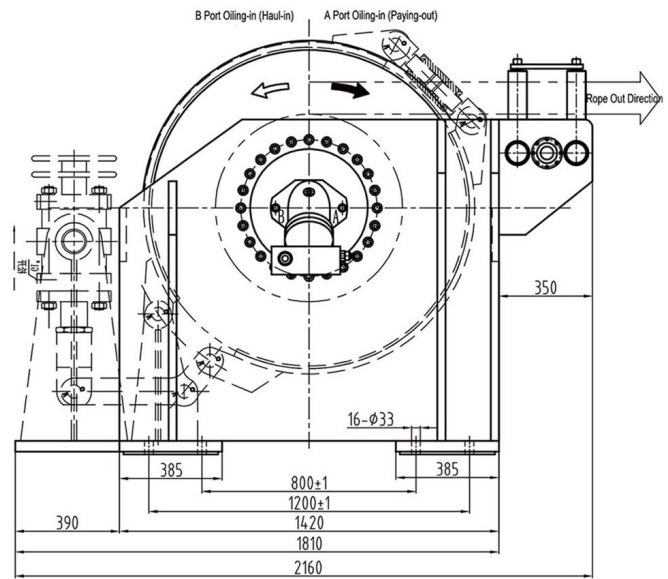
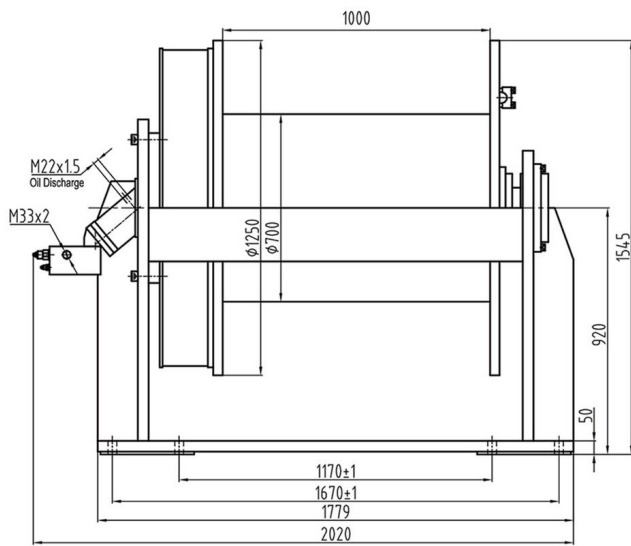
- High Capacity: Handles up to 25 tons for heavy-duty lifting and pulling tasks.
- Robust Hydraulic System: Utilizes hydraulic power for reliable and efficient operation.
- Versatile Use: Ideal for a variety of industrial, commercial, and off-road applications.
- 3 Year Warranty, Customer Support and Service in the USA

Winch Description

This powerful 25-ton hydraulic winch is equipped with two automatic brakes for enhanced safety and control. It features a spooler fairlead for smooth and efficient operation of the winch line. Designed for heavy-duty applications, it provides exceptional strength and reliability for demanding lifting and pulling tasks.

Technical Specifications

1st Layer Rated Capacity	55115 lb / 25000 kg	Recommended Wire Rope	ø1 1/2 in ø38 mm x 150 m
Speed (f/m) / min	0~32 ft / 0~10 m	Standards Compliance	SAE-J706
Number of Speeds	1 Speed	Warranty	3 Year
IEC Motor Protection	IP67		



Packaging Weight & Dimensions

Package 1 Length	86 in / 218.44 cm
Package 1 Height	62 in / 157.48 cm
Package 1 Width	82 in / 208.28 cm