

3 Ton Fast Hydraulic Winch 46 m/min

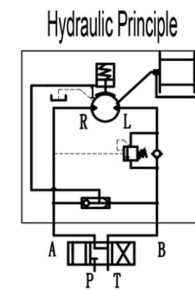
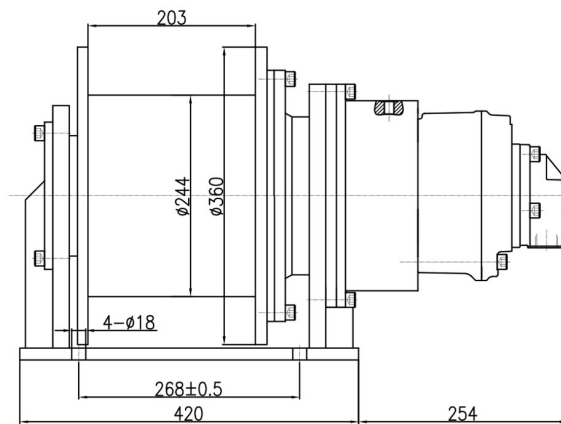
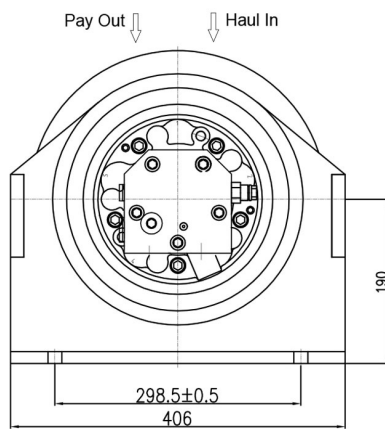
Key features

- 3 Year Warranty, Customer Support and Service in the USA

3 Ton Fast Hydraulic Winch 46 m/min

Technical Specifications

1st Layer Rated Capacity	6856 lb / 3110 kg	Oil Pressure	16 Mpa
Speed /min	150 ft / 46 m /min	Oil Flow	140 l/min
Number of Speeds	1 Speed	Gear Ratio	1:20
Duty Class	H4/M5/2m/Class D	Wire Rope	ø 16 mm x 34 m
Motor/Engine Type	GM1-90 Hydraulic	Standards Compliance	ASME B30.7
Motor Brake	Motor Equivalent Torque 1.37 N.m/bar	Warranty	3 Year



A Port: M22*1.5
B Port: M22*1.5
T Discharge Port: G1/4"