

330 lbs. Manual Winch Automatic Brake



Key features

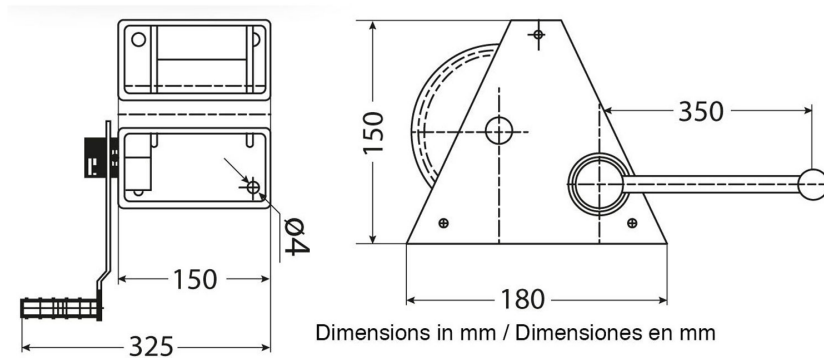
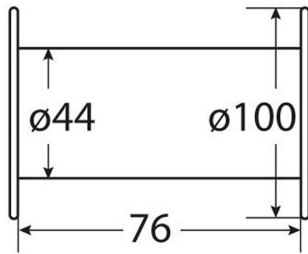
- High Load Capacity: Capable of handling up to 330 lbs, suitable for various lifting and pulling tasks.
- Automatic Brake: Features an automatic brake system to ensure secure holding of the load and prevent slippage.
- Manual Operation: Operates manually, offering a reliable solution where power sources are not available.
- 1 Year Warranty, Customer Support and Service in the USA

Winch Description

This manual winch supports a 330 lbs capacity and features an automatic brake for enhanced safety and control. Designed for reliable operation, it ensures secure and smooth handling of loads while providing ease of use for various lifting and pulling tasks.

Technical Specifications

1st Layer Rated Capacity	330 lb / 150 kg	Drum Brake	Automatic
Number of Speeds	1 Speed	Recommended Wire Rope	ø3/16 in x 72 ft ø4.76 mm x 22 m
Motor Type (68)	Manual Crank	Standards Compliance	ASMEB30.7
Gear Ratio	2.8:1	Warranty	1 Year



Unit Weight & Dimensions

Total Unit Weight	17 lbs / 8 Kg
--------------------------	---------------

Packaging Weight & Dimensions

Package 1 Net Weight	17 lbs / 8 Kg
Package 1 Width	8 in / 20.32 cm
Package 1 Gross Weight	19 lbs / 9 Kg
Package 1 Height	7 in / 17.78 cm
Package 1 Length	9 in / 22.86 cm