

5 ton Twin Motor High Speed Winch Heavy Duty 480V 3 Phase SEW UL Motor UL508A Control Variable Speed Made in USA

Key features

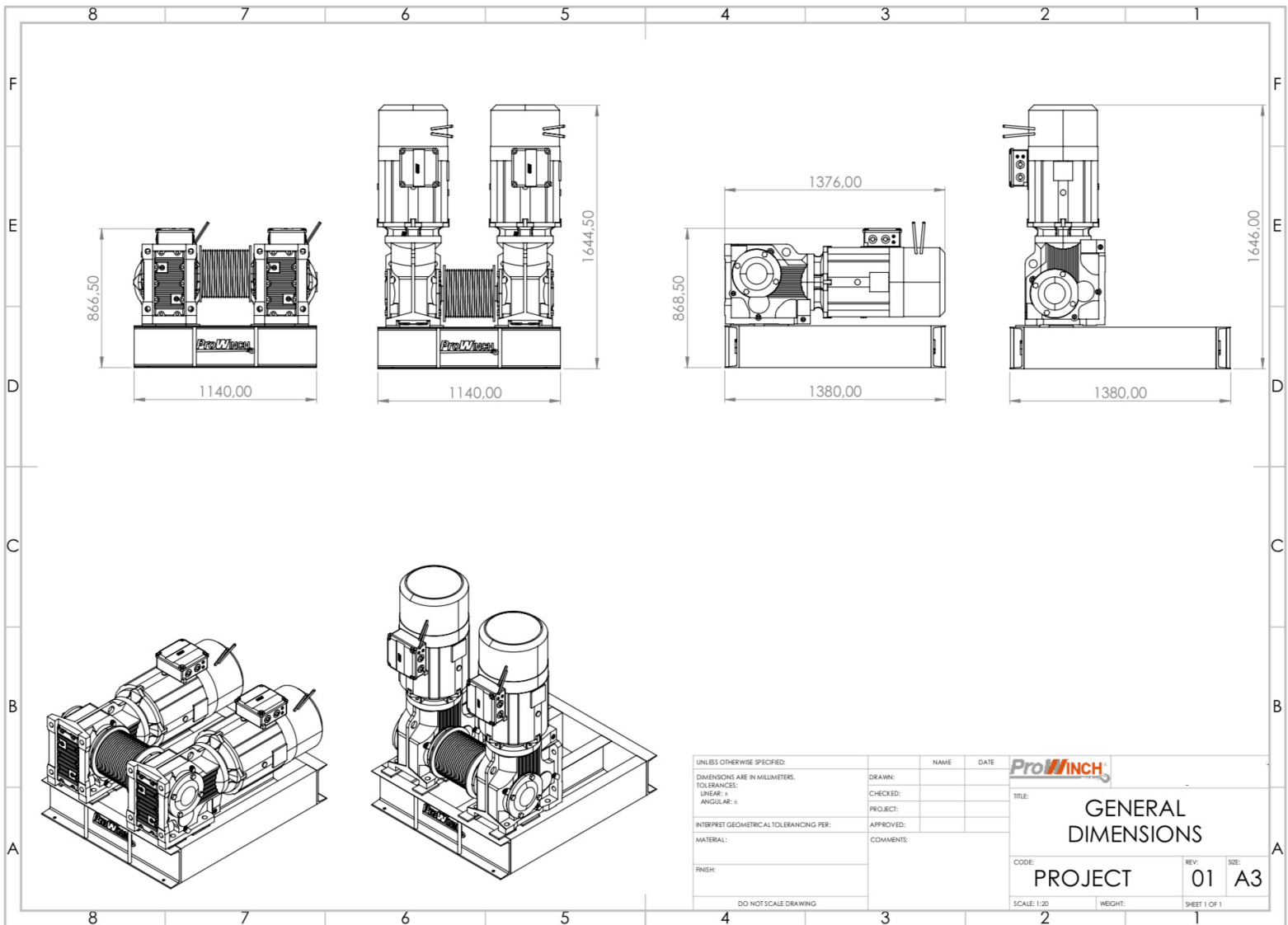
- Load Capacity: Handles up to 5 tons (10,000 lbs), ideal for demanding heavy-duty lifting and pulling tasks.
- Twin Motor Design: Equipped with twin SEW UL motors for enhanced power, reliability, and high-speed performance.
- High Speed: Provides high-speed operation for efficient and quick handling of heavy loads.
- 3 Year Warranty, Customer Support and Service in the USA

Winch Description

The PWTM5000-480-VS-UL Prowinch 11000 lbs compact winch allows you to easily pull heavy loads in a Fast and Precise manner. The strong Twin Gearmotors makes it perfect for use in a wide variety of situations and environments. With Horizontal and Vertical layout this winch includes a UL508A Variable Speed Control Designed and made by Prowinch in USA. There are a variety of optional add-ons available for a more customized experience.

Technical Specifications

1st Layer Rated Capacity	11711 Lb / 5323 Kg @ 60HZ	Control	Pendant Control - 2 Button Emergency Stop and Speed Potentiometer
Rated Load Capacity	5 Ton	Control Voltage	24v DC
Last Layer Rated Capacity	11711 Lb / 5323 Kg @ 60HZ	Electric Control Box	UL508A Certified Control Box - Made in USA
Number of Layers	1	Transmission / Reducer Type	Helical-bevel
Speed (f/m) / min	270 ft/min 82 m/min @ 60HZ	Gear Ratio	19.74:1
Number of Speeds	Variable Speed	Drum Brake	Optional
Voltage	3 Phase 380~480V 50/60Hz	Free Spooling Clutch Type	Manual Brake Release
Total Power Watts	110 KW	Recommended Wire Rope	W63618A1, 6x36 IWRC \varnothing 9/16 MS 33600 lb EIPS
Motor Type (68)	TEFC with DC Brake and Forced Vent	Humidity	<85%
Motor AMP	70 A x 2	Standards Compliance	ASME B30.7 / UL508A / UL Type 4 / USA (UR) / Canada (CSA)
IEC Motor Protection	IP55	Made in	USA
IEC Electric Control Box Protection	IP66	Warranty	3 Year



Unit Weight & Dimensions

Drum BD Barrel Diameter (58)	ø300 mm
Drum DL Length (56)	ø400 mm
Drum FD Flange Diameter (57)	ø350 mm