

## 5 ton Twin Motor High Speed Winch Heavy Duty 240V 3 Phase SEW UL Motor UL508A Control Variable Speed Made in USA

### Key features

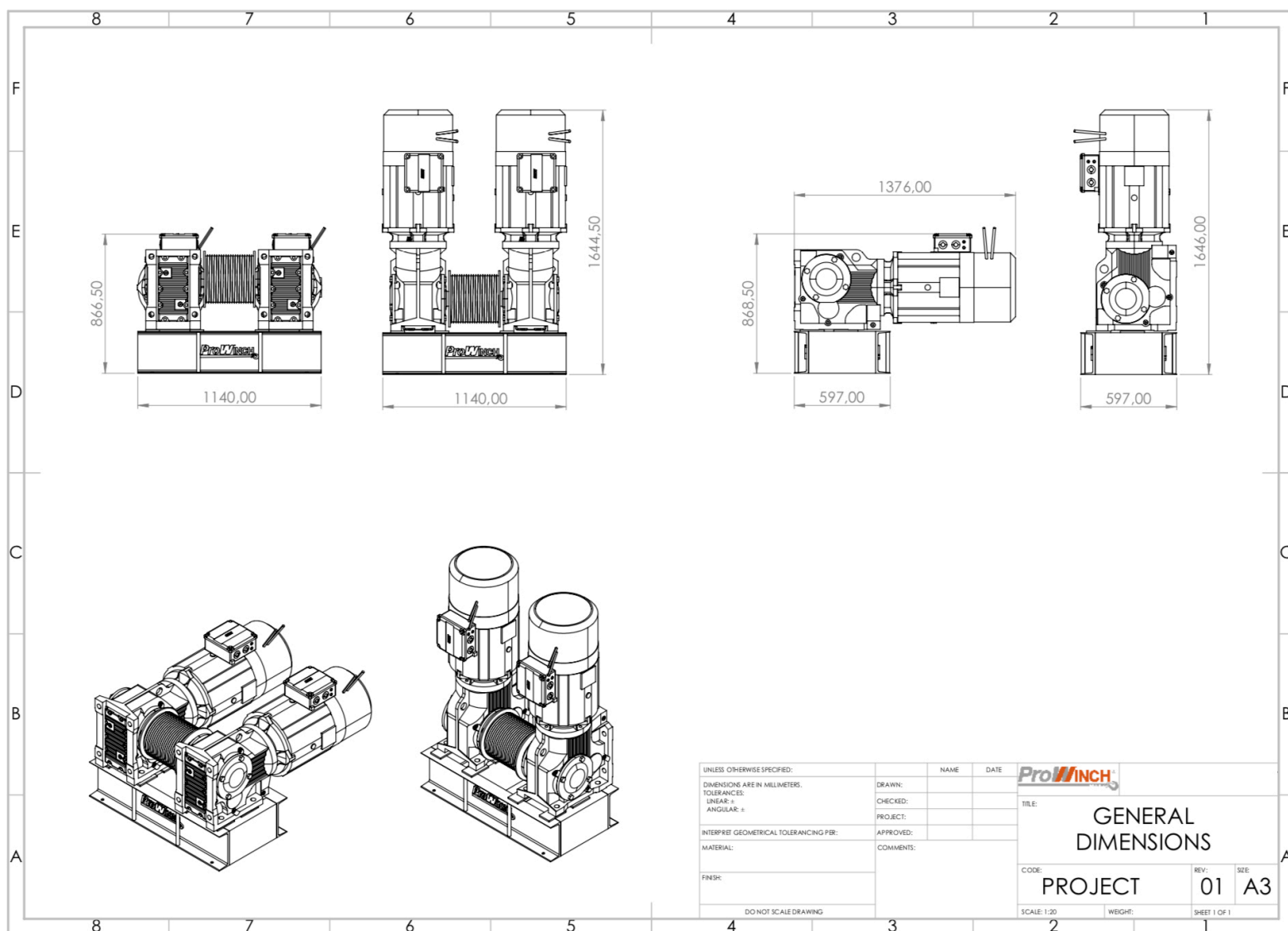
- H5 Super Heavy Duty Super Fast Variable Speed Winch Twin Invertex Drivers
- 2 Motor Brake and 48 kW x 2 Dynamic Brake
- UL508A Certified Control Panel
- Twin SEW Eurodrive Motor w/Brake and Forced Ventilation
- 3 Year Warranty, Customer Support and Service in the USA

### Twin Motor Fast Winch

The **PWTM5000-240-VS-UL Prowinch 11000 lbs compact winch** allows you to easily pull heavy loads in a Fast and Precise manner. The strong Twin Gearmotors makes it perfect for use in a wide variety of situations and environments. With Horizontal and Vertical layout this winch includes a UL508A Variable Speed Control. Designed and made by Prowinch in USA. There are a variety of optional add-ons available for a more customized experience.

## Technical Specifications

<b>Rated Load Capacity</b>	5 Ton	<b>Recommended Resistance</b>	PW-RS-6000-64x8
<b>1st Layer Rated Capacity</b>	11711 Lb / 5323 Kg @ 60HZ	<b>Dynamic Brake</b>	PW-RS-6000-64x8 (48 kW - Ohms)
<b>Last Layer Rated Capacity</b>	11711 Lb / 5323 Kg @ 60HZ	<b>Control</b>	Pendant Control - 2 Button Emergency Stop and Speed Potentiometer
<b>Number of Layers</b>	1	<b>Control Voltage</b>	24v DC
<b>Speed /min</b>	270 ft/min 82 m/min @ 60HZ	<b>Emergency Stop</b>	Yes
<b>Number of Speeds</b>	Variable Speed	<b>Electric Control Box</b>	UL508A Certified Control Box - Made in USA
<b>Voltage</b>	3 Phase 208~240V	<b>Operating Temperature Range</b>	-4 ~ 104° F / -20 ~ 40° C
<b>Input Phases</b>	3	<b>Transmission / Reducer Type</b>	Helical-bevel
<b>MCB UL489</b>	500 Amp Type B	<b>Gear Ratio</b>	19.74:1
<b>UL508 Disconnect Switch</b>	MCCB 2-position lockable in ON-OFF, defeatable, NEMA 12, OSHA 1910.147	<b>Reducer Brake</b>	2 Motor Brakes
<b>Total Power Watts</b>	110 KW	<b>Drum Brake</b>	Optional
<b>Duty Class</b>	H5/M7/4m/Class E	<b>Design Factor</b>	5:1
<b>Motor Brand and Model</b>	SEW Eurodrive K107 DRN225M4/BE32HR x 2	<b>D/d Ratio</b>	18
<b>Motor/Engine Type</b>	TEFC with DC Brake and Forced Vent	<b>Recommended Wire Rope</b>	W63618A1, 6x36 IWRC ø9/16 MS 33600 lb EIPS
<b>Motor/Engine Power</b>	45 kW x 2	<b>Drum Type</b>	Cross over Grooved
<b>Motor AMP</b>	140 A x 2	<b>Humidity</b>	<85%
<b>Motor Poles</b>	4	<b>Noise Level</b>	83 db
<b>Motor RPM</b>	1785	<b>Standards Compliance</b>	ASME B30.7 / UL508A / UL Type 4 / USA (UR) / Canada (CSA)
<b>Motor Brake</b>	SEW BE32HR Electromagnetic Brake Disc	<b>Made in</b>	USA
<b>Insulation Grade</b>	F	<b>Warranty</b>	3 Year
<b>IEC Motor Protection</b>	IP55	<b>Fuse UL489</b>	250 Amp Class T x 2
<b>IEC Electric Control Box Protection</b>	IP66	<b>UL File</b>	NITW.E524056 / NITW7.E524056
<b>Variable Frequency Driver</b>	Invertek ODP-2-72075-3HF4N-MN x 2	<b>Personnel Lifting Capacity</b>	5500 lb as per ASME B30.23
<b>VFD Power</b>	55 kW x 2		



## Unit Weight & Dimensions

BD Barrel Diameter	ø300 mm
DL Drum Length	ø400 mm
FD Flange Diameter	ø350 mm