

Double Girder Wire Rope Hoist 20 tons M6 class Service

Key features

- Duty Classification H4/M5/2m/Class D
- US and EU Standards ASME HST-4, ASME B30.16, IEC60204-32
- 3 Year Warranty, Customer Support and Service in the USA



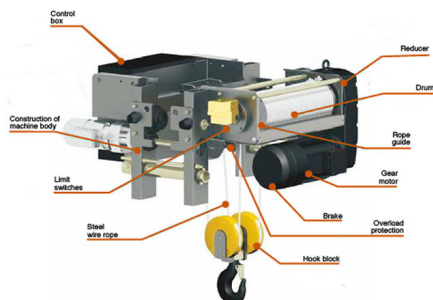
Electric Wire Rope Hoist Description

Our Double Girder Wire Rope Hoist 20 tons M6 class Service have a compact structure, light weight but high strength, precise positioning to improve the working efficiency. Modular design and multiple options can meet various demands of customers. High quality mechanical & electronic components can ensure good working performance. Low operation cost, green energy and environment friendly. Safe and reliable, running monitoring simple and convenient maintenance with high production efficiency improved by precise positioning.

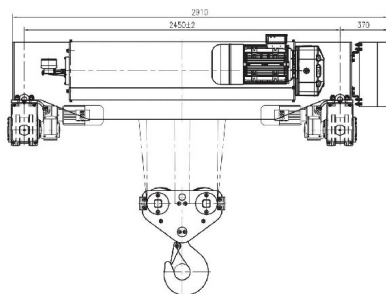
Technical Specifications

Rated Load Capacity	20 t	Hoist Motor Power	Sew Eurodrive
Standard Lifting Height	50 ft / 15 m	Hoist Reducer	Sew Eurodrive FA
Speed /min	0.8 ft / 3.3 m	Contactor	Schneider
Number of Speeds	2 Speed	Transmission / Reducer Type	Sew Eurodrive
Voltage	3 Phase 380/440~480V 50/60Hz	Humidity	<85%
Available Voltages	380V 50Hz	Temperature	-4°~104° F / -20°~40° C
Total Power Watts	5/20 kw	Trolley Power	1.2 kw x 2
Duty Class	H4/M6/3m/Class D	Noise Level	82 dB
Insulation Grade	F	Trolley Speed /min	16 ~ 65 ft/min. / 5 ~ 20 m/min
IEC Motor Protection	IP55	Standards Compliance	ASME HST-4 , ASME B30.16 , B30.17 , EN14492-2 , EN60204-32
IEC Electric Control Box Protection	IP65	Warranty	3 Year
Control Voltage	48V		

MODULE DESIGN FLEXIBLE COMBINATION



Model/Modelo		PWRHE20TM6B
LIFTING MOTOR	Power / Potencia	5/20 kW
	Rotation Speed / Velocidad de Rotación	710/2880 r/min
	Insulation / Aislamiento	F
	Protection Grade / Grado de Protección	IP54
	ED rate	40%
TRAVELLING MOTOR	Power / Potencia	1.2kWx2
	Rotation Speed / Velocidad de Rotación	32 r/min
	Insulation / Aislamiento	F
	Protection Grade / Grado de Protección	IP54
	ED rate	40%
Girder Gauge / Carro de Viga		2450mm



Compact structure, light weight but with high strength, precise positioning to improve the working efficiency.

Prowinch wire rope hoist adopt European design the mechanical structure is compact and strong but with light weight and small size. For single girder type hoist, low headroom is the standard feature, which means can cover larger room and height on working site. For double girder type hoist, the wheel pressure is small and can be customized by different girder span our wire rope hoist with dual speed as standard on lifting & travelling, compared with single speed hoist. It will bring good performance on positioning, and will improve the working efficiency absolutely.

Modular design and multiple options can meet various demands of customer

Prowinch concept of modular design has always been throughout the whole product design which ensures the standard and interchangeability of parts greatly reduces the maintenance costs of products. All products series of Prowinch provided with complete set of spare parts and professional service team members to provide after-sales service to solve the problems from customers in time.

High quality mechanical & electronic components can ensure good working performance

Prowinch select every component seriously no matter to the mechanical parts like motors, brakes and Steel wire rope or the electronics as inverter, contactors, and relay. High quality components are always the basic rule for every good products. We believe that only the good quality components integrated together can ensure the good working performance as complete machine.

Low operation cost. Green energy and environment friendly

Prowinch wire rope hoist with same design crane can significantly reduce self-weight of complete system and decrease the total power consumption which almost save 30% power every year on average compared with other domestic products. Meanwhile the running noise is lower than national standard which can create a quiet and comfort working environment.

Safe and reliable, running monitoring and simple and convenient maintenance

Prowinch Technology product is provided with various functions such as monitoring protection which can make detailed records of running condition of electric hoist running status of motor and safety working cycle, and provide warning in advance. All records can provide data for maintenance and the root of problems should be understood to be able to provide maintenance much more likely and efficiently.

High Production Efficiency Improved by Precise positioning

Prowinch wire rope hoist with double lifting speed as standard configuration and transitional speed control of trolley ensure the efficient running of crane in workshop and ensure the plans of customers can be implemented as Schedule. By the frequency conversion technology it can reduce waving of loads which makes the positioning more quickly and accurately. Meanwhile it can reduce the impact on whole machine when start or braking more smooth and safe when operation.



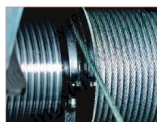
DRIVE TECHNOLOGY
SEW Eurodrive high performance Motor, reducer and brake. Compact design, light weight, low energy consumption, low noise and eco-friendly design. Electromagnetic brake disc (Asbestos-free). Long Service life and easy maintenance.



OVERLOAD PROTECTION
Load Cell connected to a Limit Relay (Adjustable) to avoid overloading of the hoist.



WIRE ROPE GUIDE
Helps the winding of the rope on the drum. Light weight and highly resistance. Design to reduce friction on the wire rope and avoid premature wear.



HIGH PERFORMANCE WIRE ROPES
High performance wire rope with tensile strength up to 2160Mpa. Galvanized surface and high flexibility to ensure long service life.



DRUM
Q345 steel, seamless grooved drum. Design to fulfill FEM and ASME standards and ensure a safe operation.



LIMIT SWITCHES
High precision adjustable height limit switches, for all movements of hoist and trolley.

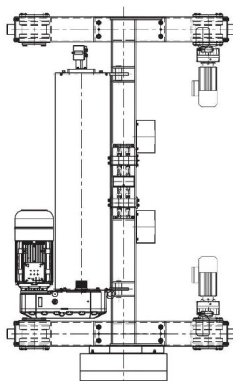
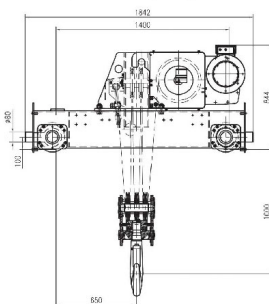


LIFTING HOOK GROUP
DIN standard lifting hook with safety clasp. Forged by the high-strength material of T grade.



CONTROL BOX
Electric Control box with Schneider Inverter, Eaton contactors and components. Compact design, easy access, IP65 Enclosure.

Referential Images
Specifications may change without notice



Unit Weight & Dimensions

Total Unit Weight	4961 lbs / 2251 Kg
--------------------------	--------------------

Packaging Weight & Dimensions

Package 1 Net Weight	4961 lbs / 2251 Kg
-----------------------------	--------------------

Package 1 Width	78 in / 198.12 cm
------------------------	-------------------

Package 1 Gross Weight	5512 lbs / 2501 Kg
-------------------------------	--------------------

Package 1 Height	39 in / 99.06 cm
-------------------------	------------------

Package 1 Length	118 in / 299.72 cm
-------------------------	--------------------