

3.2 ton Electric Wire Rope Hoist 39 ft. H4 Duty



Key features

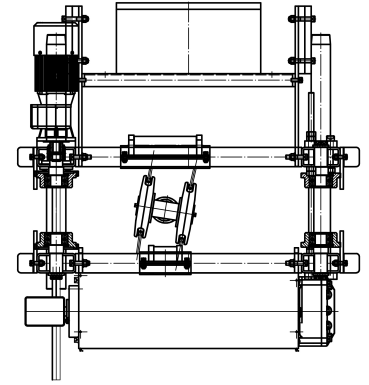
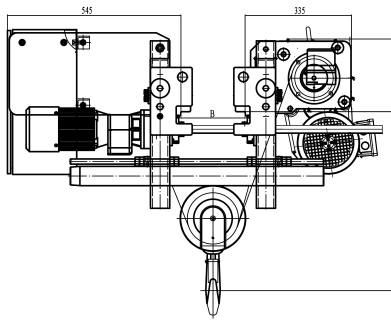
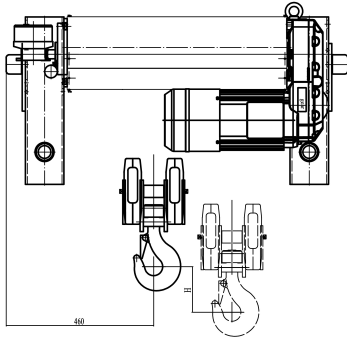
- Load Capacity: 3.2 tons (7,000 lbs), capable of handling substantial lifting tasks.
- Lifting Height: 39 feet (approximately 12 meters), suitable for taller structures and equipment.
- Duty Rating: H4 Duty, designed for heavy and continuous use, ensuring durability and performance under demanding conditions.
- 3 Year Warranty, Customer Support and Service in the USA

Electric Wire Rope Hoist Description

Our 3.2 Ton Electric Wire Rope Hoist 39 ft. M5/H4 have a compact structure, light weight but high strength, precise positioning to improve the working efficiency. Modular design and multiple options can meet various demands of customers. High quality mechanical & electronic components can ensure good working performance. Low operation cost, green energy and environment friendly. Safe and reliable, running monitoring simple and convenient maintenance with high production efficiency improved by precise positioning.

Technical Specifications

Rated Load Capacity	7000 lb / 3200 kg	Hoist Motor Power	Sew Eurodrive
Standard Lifting Height	40 ft / 12 m	Hoist Reducer	Sew Eurodrive FA
Speed (f/m) / min	2.62 - 16.4 ft/min / 0.8 - 5 m /min	Contactora	Schneider
Number of Speeds	2 Speed	Transmission / Reducer Type	Sew Eurodrive
Voltage	3 Phase 208~240/440~480V 50/60Hz	Gear Ratio	61.24
Available Voltages	400V 50Hz	Wire Rope	Ø1/4 in / Ø6 mm
Total Power Watts	0.5-3.3 kW	Humidity	<85%
Duty Class	H4/M5/2m/Class D	Temperature	-4°~104° F / -20°~40° C
Motor AMP	7.2 (@ 380v)	Trolley Power	0.37 ~ 0.64 kW
Motor RPM	2930 / 470 rpm (@50hz)	Noise Level	82 dB
Motor Brake	Electromagnetic Release Brake >125%	Trolley Speed /min	16 ~ 65 ft/min. / 5 ~ 20 m/min
Insulation Grade	F	I-Beam Width Range	5.9~11.8 in / 150~300 mm
IEC Motor Protection	IP55	Standards Compliance	ASME HST-4 , ASME B30.16 , B30.17 , EN14492-2 , EN60204-32
IEC Electric Control Box Protection	IP65	Warranty	3 Year
Control Voltage	48V		



Unit Weight & Dimensions

H Minimum Headroom

556 mm

X Wheels Diameter

3.9 in / 100 mm

A Total Height

793 mm