

10 Tons Air Chain Hoist with Trolley - Explosion Proof

Key features

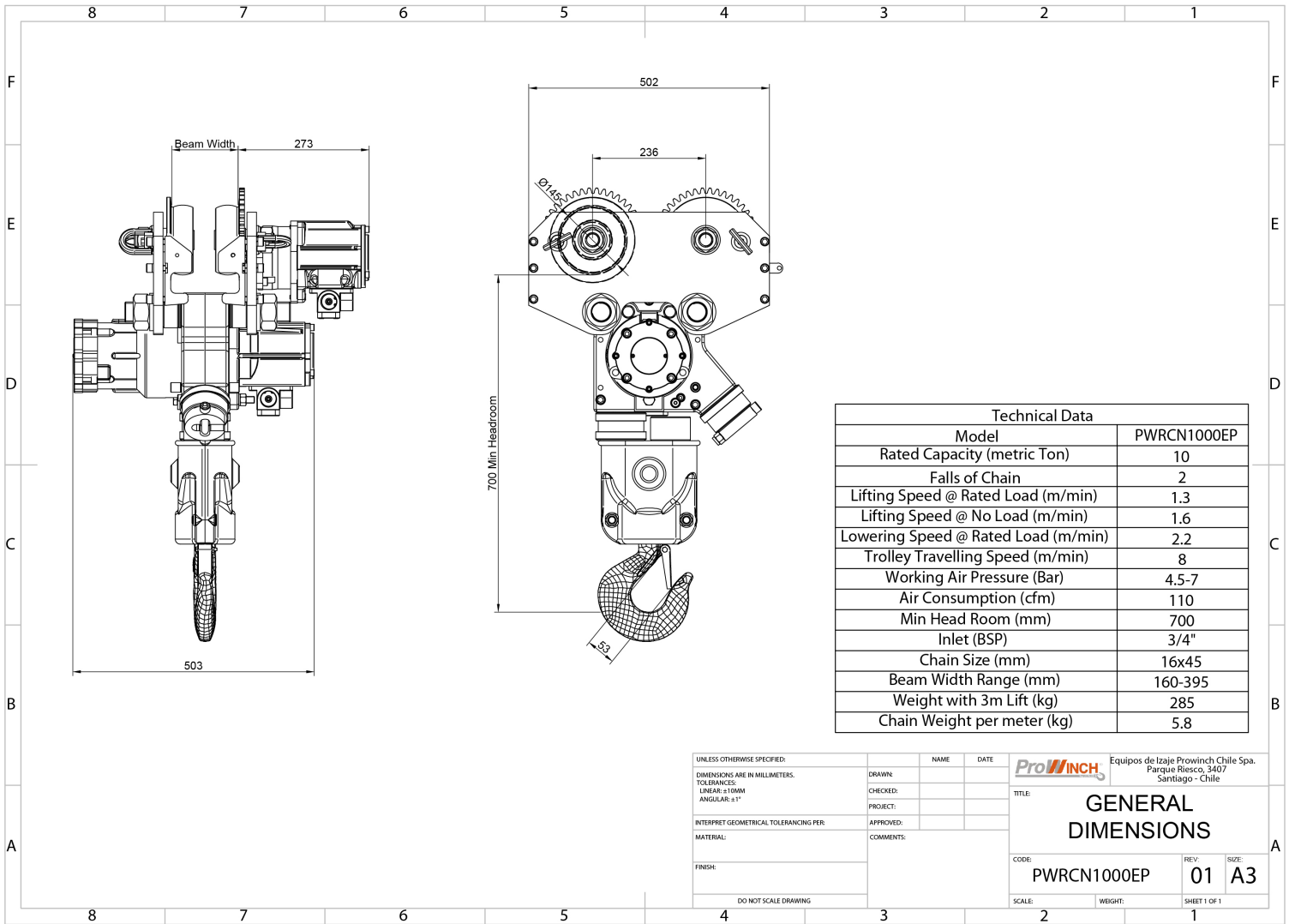
- 3 Year Warranty, Customer Support and Service in the USA



1 Tons Air Chain Hoist with Trolley - Explosion Proof

Technical Specifications

Rated Load Capacity	10 Ton	Air Inlet Size	3/4" BSP
Standard Lifting Height	40 ft / 12 m	Air hose dimension	19 - 25 mm (3/4 - 1 ")
Number of Speeds	1 Speed	Air Consumption	110 cfm / 3.12 m3/min
Air Hoist Lifting Speed at Rated Load	1.3 m/min	Transmission / Reducer Type	Epicycle Gearbox (Grease Filled and Seald)
Air Hoist Lifting Speed Unloaded	1.6 m/min	Load Chain Type	G80 RUG Germany 5:1 Safety Factor
Capacity Range	8	Load Chain Size	16 x 45 mm
Air Hoist Lowering Speed at Rated Load	2.2 m/min	Chain Falls	2
Maximum Safe Overload	Overload Protection Slip Clutch 130% WLL	Chain Length	24 m
Explosion Proof Protection	EX 2 GD IIA T4 EX 2 GD IIB T4 EX 2 GD IIC T4 ZONES 1, 2 AND 21, 22 - Copper Coated: Chain hook, bottom block, Sprocket, Load sleeve, Safety Catch - Stainless Steel Wheels	Trolley Power	0.9 kW
Protection Exclusions	- HYDROGEN DISULPHIDE - ETHELENE OXIDE	Noise Level	84 dBA @ 1m
Duty Class	100% Duty Cycle	Trolley Speed /min	8 m/min
Motor/Engine Type	Vane Rotary Motor - Lubrication Free - Rust Free & Replaceable Stainless Steel Cylinder	Trolley Number of Speeds	1
Motor/Engine Power	3.2 kW	I-Beam Width Range	160 - 395 mm
Motor Brake	>125% WLL Automatic self-adjusting multidisc Brake	Minimum Turn Radius	3 m
Control	Pendant Control 4 buttons w/emergency stop	Standards Compliance	ASME B30.11 / B30.16 / B30.17 / HST-5 DIN EN818-7 SANS 1638 compliant ATEX EX Classification according to EC Directive on Hazardous Locations 94/9/EEC
Emergency Stop	Yes, on pendant Control	Made in	Southafrica
Operating Temperature Range	-20°C to 70°C	Warranty	3 Year
Air Pressure	4.5-7 Bar		



Unit Weight & Dimensions

T Trolley Motor Width	273 mm
D Depth	502 mm
R Trolley Cover Width	-
W Width	685 mm
H Minimum Headroom	700 mm
J Hook Opening	53 mm