



1.5 tons Explosion Proof Air Hoist with Trolley ATEX Directive Nickel Kit

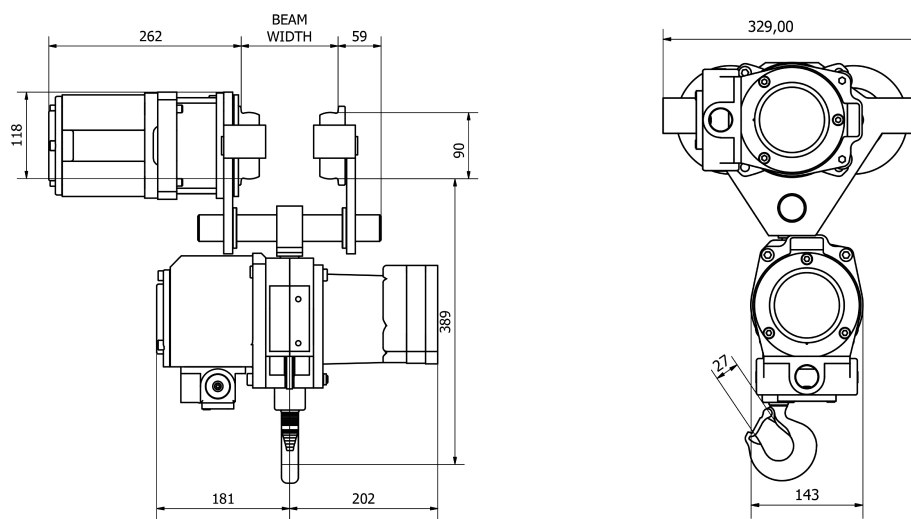
Key features

- 1.5 Tons Pneumatic Chain Hoist - Heavy Duty - Explosion Proof with Nickel Coatings
- RUD G80 chain made in Germany - 9 meters lifting height (other heights available upon request) Safety factor 5:1
- Includes: Multi-disc slip clutch load limiter / Pendant Control with emergency stop (8 meters) / Chain containers
- Meets and exceeds ASME B30.16 B30.17 / HST-5 standards / Load Test at 130% SWL / ATEX Directive
- 3 Year Warranty, Customer Support and Service in the USA

1.5 tons Explosion Proof Air Hoist with Trolley ATEX Directive Nickel Kit

Technical Specifications

Rated Load Capacity	1.5 Ton	Air Inlet Size	1/2" BSP
Standard Lifting Height	20 ft / 6 m	Air hose dimension	13 mm (1/2")
Number of Speeds	1 Speed	Air Consumption	75 cfm / 2.1 m3/min
Air Hoist Lifting Speed at Rated Load	8.8 m/min	Transmission / Reducer Type	Epicycle Gearbox (Grease Filled and Seald)
Air Hoist Lifting Speed Unloaded	13 m/min	Load Chain Type	G80 RUG Germany 5:1 Safety Factor
Air Hoist Lowering Speed at Rated Load	13.5 m/min	Load Chain Size	9 x 27 mm
Maximum Safe Overload	Overload Protection Slip Clutch 130% WLL	Chain Falls	1
Explosion Proof Protection	EX 2 GD IIA T4 EX 2 GD IIB T4 EX 2 GD IIC T4 ZONES 1, 2 AND 21, 22 - Nickel Coated: Chain hook, bottom block, Sprocket, Load sleeve, Safety Catch - Stainless Steel Wheels	Chain Length	9 m
Protection Exclusions	- HYDROGEN DISULPHIDE - ETHELENE OXIDE	Trolley Power	0.3 kW
Duty Class	100% Duty Cycle	Noise Level	84 dBA @ 1m
Motor/Engine Type	Vane Rotary Motor - Lubrication Free - Rust Free & Replaceable Stainless Steel Cylinder	Trolley Speed /min	12 m/min
Motor/Engine Power	1.4 kw	Trolley Number of Speeds	1
Motor Brake	>125% WLL Automatic self-adjusting multidisc Brake	I-Beam Width Range	65 - 280 mm
Control	Pendant Control 4 buttons w/emergency stop	Minimum Turn Radius	1.5 m
Emergency Stop	Yes, on pendant Control	Standards Compliance	ASME B30.11 / B30.16 / B30.17 / HST-5 DIN EN818-7 SANS 1638 compliant ATEX EX Classification according to EC Directive on Hazardous Locations 94/9/EEC
Operating Temperature Range	-20°C to 70°C	Made in	Southafrica
Air Pressure	4 - 6 Bar	Warranty	3 Year



Unit Weight & Dimensions

H Minimum Headroom

402 mm