



## 1.5 Tons Air Chain Hoist with Trolley - ATEX Explosion Proof

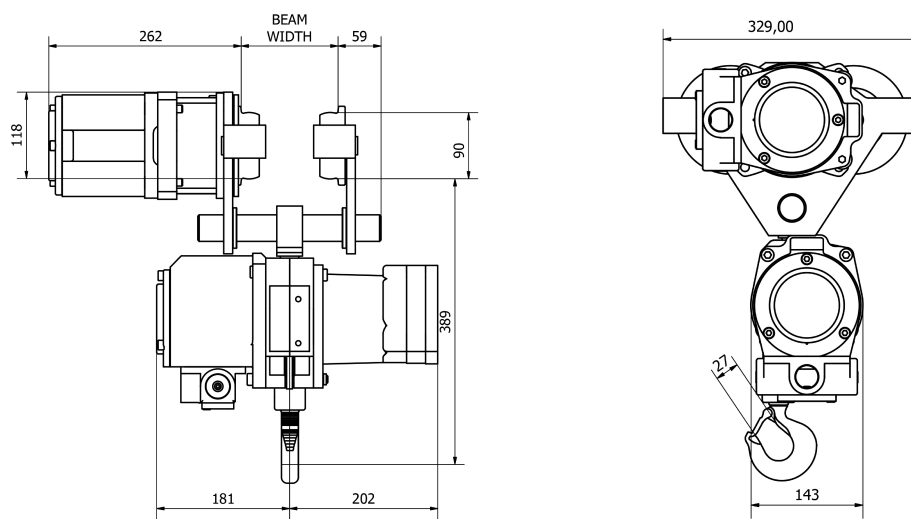
### Key features

- 1.5 Tons Pneumatic Chain Hoist - Heavy Duty - Explosion Proof
- RUD G80 chain made in Germany - 9 meters lifting height (other heights available upon request) Safety factor 5:1
- Includes: Multi-disc slip clutch load limiter / Pendant Control with emergency stop (8 meters) / Chain containers
- Meets and exceeds ASME B30.16 B30.17 / HST-5 standards / Load Test at 130% SWL / ATEX Directive
- 3 Year Warranty, Customer Support and Service in the USA

1.5 Tons Air Chain Hoist with Trolley - ATEX Explosion Proof

## Technical Specifications

<b>Rated Load Capacity</b>	1.5 Ton	<b>Air Inlet Size</b>	1/2" BSP
<b>Standard Lifting Height</b>	20 ft / 6 m	<b>Air hose dimension</b>	13 mm (1/2")
<b>Number of Speeds</b>	1 Speed	<b>Air Consumption</b>	75 cfm / 2.1 m3/min
<b>Air Hoist Lifting Speed at Rated Load</b>	8.8 m/min	<b>Transmission / Reducer Type</b>	Epicycle Gearbox (Grease Filled and Seald)
<b>Air Hoist Lifting Speed Unloaded</b>	13 m/min	<b>Load Chain Type</b>	G80 RUG Germany 5:1 Safety Factor
<b>Air Hoist Lowering Speed at Rated Load</b>	13.5 m/min	<b>Load Chain Size</b>	9 x 27 mm
<b>Maximum Safe Overload</b>	Overload Protection Slip Clutch 130% WLL	<b>Chain Falls</b>	1
<b>Explosion Proof Protection</b>	EX 2 GD IIA T4  EX 2 GD IIB T4  EX 2 GD IIC T4  ZONES 1, 2 AND 21, 22  - Copper Coated: Chain hook, bottom block, Sprocket, Load sleeve, Safety Catch  - Stainless Steel Wheels	<b>Chain Length</b>	9 m
<b>Protection Exclusions</b>	- HYDROGEN DISULPHIDE - ETHELENE OXIDE	<b>Trolley Power</b>	0.3 kW
<b>Duty Class</b>	100% Duty Cycle	<b>Noise Level</b>	84 dBA @ 1m
<b>Motor/Engine Type</b>	Vane Rotary Motor - Lubrication Free - Rust Free & Replaceable Stainless Steel Cylinder	<b>Trolley Speed /min</b>	12 m/min
<b>Motor/Engine Power</b>	1.4 kw	<b>Trolley Number of Speeds</b>	1
<b>Motor Brake</b>	>125% WLL Automatic self-adjusting multidisc Brake	<b>I-Beam Width Range</b>	65 - 280 mm
<b>Control</b>	Pendant Control 4 buttons w/emergency stop	<b>Minimum Turn Radius</b>	1.5 m
<b>Emergency Stop</b>	Yes, on pendant Control	<b>Standards Compliance</b>	ASME B30.11 / B30.16 / B30.17 / HST-5 DIN EN818-7 SANS 1638 compliant ATEX EX Classification according to EC Directive on Hazardous Locations 94/9/EEC
<b>Operating Temperature Range</b>	-20°C to 70°C	<b>Made in</b>	Southafrica
<b>Air Pressure</b>	4 - 6 Bar	<b>Warranty</b>	3 Year



## Unit Weight & Dimensions

**H Minimum Headroom**

402 mm