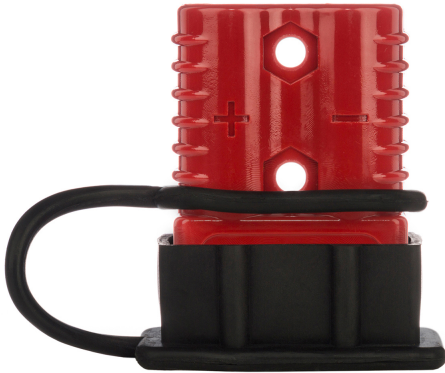


Quick Connector 250 AMP

Key features

- High Current Rating: Supports up to 250 amps, suitable for demanding electrical applications.
- Quick Connect/Disconnect: Facilitates rapid connections and disconnections for enhanced efficiency.
- Durable Construction: Made from high-quality materials to withstand harsh conditions.
- 3 Year Warranty, Customer Support and Service in the USA



Quick Connector 250 AMP Description

The Quick Connector 250 AMP is a reliable and efficient electrical connection solution designed for high-current applications. It allows for fast and easy connections and disconnections, making it ideal for use in various settings, including automotive, marine, and industrial environments. Its robust design ensures durability and a secure fit, minimizing the risk of accidental disconnection.

Technical Specifications

Warranty	3 Year
----------	--------

Unit Weight & Dimensions

Total Unit Weight	2 lbs / 1 Kg
-------------------	--------------

Packaging Weight & Dimensions

Package 1 Net Weight	2 lbs / 1 Kg
----------------------	--------------

Package 1 Width	3 in / 7.62 cm
-----------------	----------------

Package 1 Gross Weight	2 lbs / 1 Kg
------------------------	--------------

Package 1 Height	2 in / 5.08 cm
------------------	----------------

Package 1 Length	7 in / 17.78 cm
------------------	-----------------