



## 2000 lbs Davit Crane 360 Swivel with Wireless Electric Winch 12V

### Key features

- Convenient mounting plate for easy installation.
- Adjustable telescopic boom system with 3 heights and positions.
- Hoist includes a quick-acting automatic brake, emergency stop, safety key, and limit switch.
- Removable boom for easy transportation and storage.
- 1 Year Warranty, Customer Support and Service in the USA

### Prowinch 12V Davit Crane Description

The **Prowinch 2,200 lb Davit Crane** is ideal for a wide variety of uses such as boating or construction. The 3 position boom and 360 degree swivel helps you get the durable load hook in the perfect position. It has a convenient mounting plate for easy installation. The included wireless remote control offers added convenience.

### Prowinch Davit Cranes

All of our Davit Cranes are created with the goal of offering the best price-performance ratio. Key components such as lifespan factors are constantly tested and improved in order to offer the best product for the price.

### Key Components

All internal components have been upgraded to meet the highest quality standards. Final assembly and all tests are performed in the US before shipping to ensure that every unit meets the corresponding standard.

### Duty Classification

Duty classification is a key factor when choosing the right unit. This davit crane comes with an H1 electric wire rope hoist that is suitable for infrequent handling, installing and servicing heavy equipment, and idling for long periods between use. For uniformly distributed work periods, the hoist has a 12.5% max. operational time per hour and can handle up to 75 starts per hour. When being used for infrequent work periods, the hoist can be operated for 15 minutes from a cold start with up to 100 starts per hour. Operational time ratings are calculated at a 65% load factor, as per ASME Standards.

### Braking System

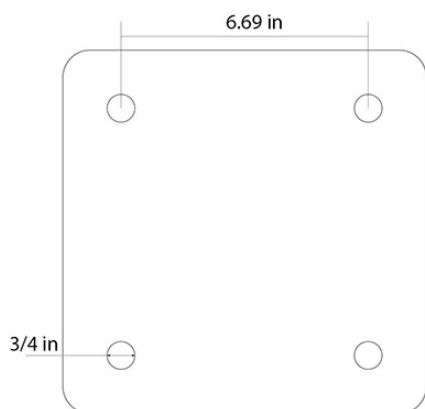
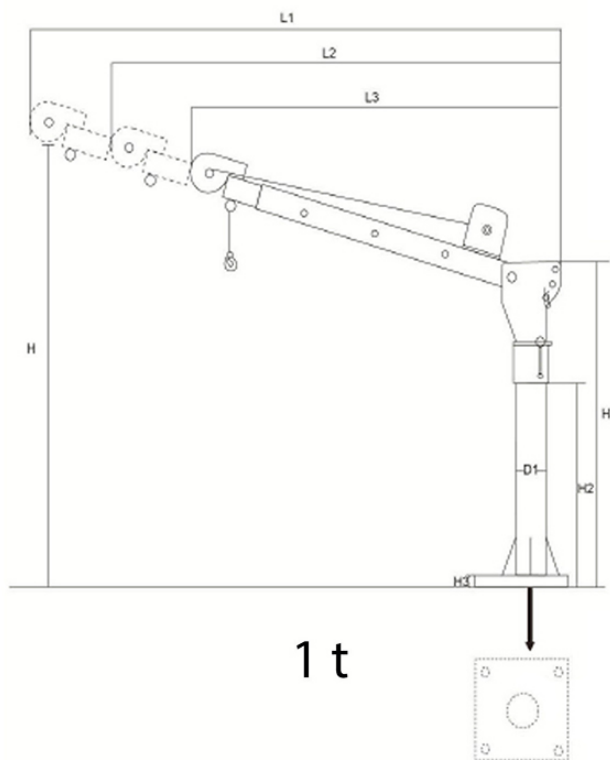
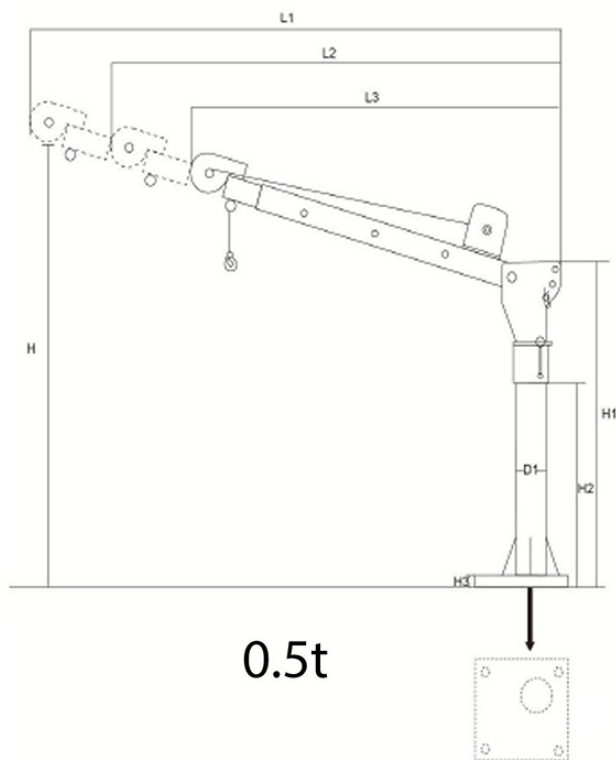
The electromagnetic brake system is tested at 125% of the hoist capacity and is designed to automatically engage immediately upon any loss of power.

Technical Specifications

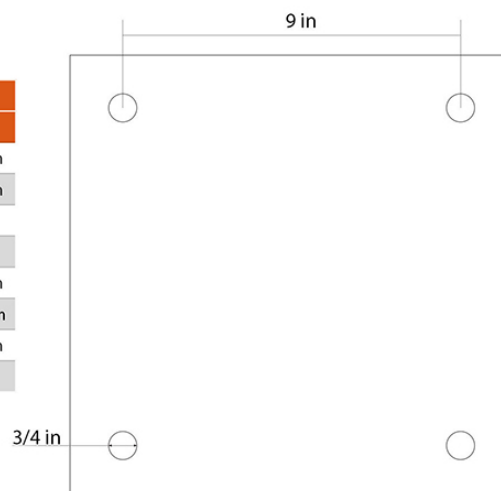
Rated Load Capacity	2200 lbs   1000 kg	IEC Motor Protection	IP67
Number of Speeds	1 Speed	Wire Rope	ø7/32 in x 21.3 ft   ø 5.5 mm x 6.5 m
Voltage	Battery Power 12 VDC	Temperature	-4°~104° F / -20°~40° C
FCC ID	2ASYP-DW12K	Noise Level	71 dB
Duty Class	H1/M2/1Cm/Class A	Standards Compliance	CE - Directive 2006/42/EC - EN14492-1:2010 / CE - Directive 2014/30/EU - EN61000-6-4: 2007 A1 - EN61000-6-2: 2005 - EN61000-3-2: 2014 - EN61000-3-3: 2013
Motor Brake	YES	Warranty	1 Year

BOOM Position	1100 lb - 0.5 t		
	1	2	3
A	1300 lbs	660 lbs	340 lbs
B	1150 lbs	580 lbs	290 lbs
C	1100 lbs	550 lbs	280 lb

BOOM Position	2200 lb - 1 t		
	1	2	3
A	2600 lbs	1300 lbs	780 lbs
B	2300 lbs	1150 lbs	690 lbs
C	2200 lbs	1100 lbs	660 lb



Variable	Capacity	
	1120 lb / 0.5 t	2240 lb / 1 t
H	82 in / 2082 mm	85 in / 2159 mm
H1	46.5 in / 1181 mm	47 in / 1193 mm
H2	30 in / 762 mm	
H3	3/4 in /	3/4 in /
L1	49 in / 1244 mm	51 in / 1295 mm
L2	42 in / 1066 mm	44 in / 1117 mm
L3	35 in / 889 mm	40 in / 1016 mm
D1	3.5 in / 88.9 mm	4 in / 101.6



## Unit Weight & Dimensions

<b>A Total Height</b>	85 in / 2159 mm
<b>Total Unit Weight</b>	158 lbs / 72 Kg

## Packaging Weight & Dimensions

<b>Package 1 Net Weight</b>	63 lbs / 29 Kg
<b>Package 3 Gross Weight</b>	100 lbs / 45 Kg
<b>Package 1 Gross Weight</b>	70 lbs / 32 Kg
<b>Package 3 Length</b>	14 in / 35.56 cm
<b>Package 1 Length</b>	12 in / 30.48 cm
<b>Package 3 Width</b>	37 in / 93.98 cm
<b>Package 1 Width</b>	21 in / 53.34 cm
<b>Package 3 Height</b>	12 in / 30.48 cm
<b>Package 1 Height</b>	9 in / 22.86 cm
<b>Package 4 Net Weight</b>	49 lbs / 22 Kg
<b>Package 2 Net Weight</b>	46 lbs / 21 Kg
<b>Package 4 Gross Weight</b>	88 lbs / 40 Kg
<b>Package 2 Gross Weight</b>	21 lbs / 10 Kg
<b>Package 4 Length</b>	10 in / 25.4 cm
<b>Package 2 Length</b>	9 in / 22.86 cm
<b>Package 4 Width</b>	48 in / 121.92 cm
<b>Package 2 Width</b>	9 in / 22.86 cm
<b>Package 4 Height</b>	14 in / 35.56 cm
<b>Package 2 Height</b>	18 in / 45.72 cm