



8 Tons Single Girder Top Running Underhung Hoist Crane

Key features

- **Load Capacity:** Designed to lift up to 8 tons, suitable for a variety of heavy-duty applications in manufacturing, warehousing, and construction.
- **Top Running Configuration:** Ensures smooth movement along the runway, facilitating efficient operations and reducing downtime.
- **Robust Construction:** Built with high-quality materials to endure demanding conditions, ensuring durability and longevity.
- **3 Year Warranty, Customer Support and Service in the USA**

The 8 Tons Single Girder Top Running Underhung Hoist Crane Description

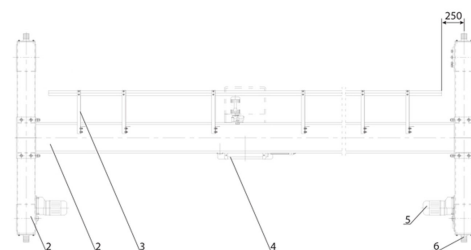
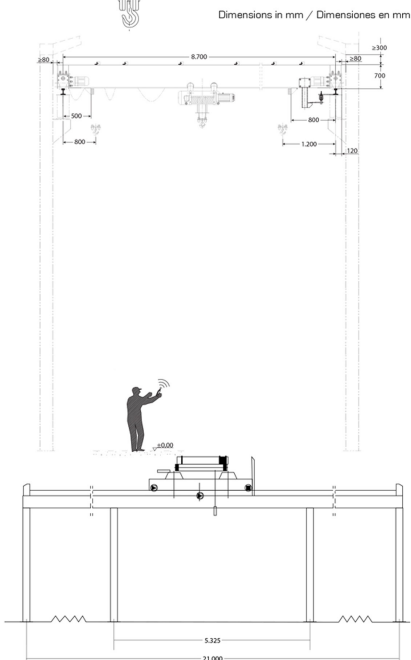
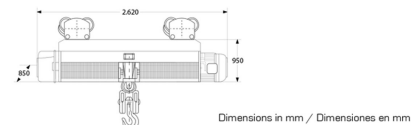
The 8 Tons Single Girder Top Running Underhung Hoist Crane is engineered for heavy-duty lifting in industrial environments. This crane combines strength with efficiency, making it ideal for handling loads up to 8 tons in confined spaces.

Technical Specifications

Warranty	3 Year
----------	--------



Standard	ASME B30.11/ ANSI Z535.4/ ANSI/ ASCE7-88/ ANSI Z244.1/ ANSI AA1264.1/ ANSI/ SAE Z26.1/ ANSI A14.3 CMAA No. 70-2000/ AISE No.6
Norma	
Warranty: 3 Year / Certification valid for 1 year / 10 year parts and service availability Garantía: 3 Años / Certificación válida por 1 año / 10 Años disponibilidad de piezas y servicio	

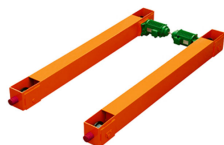


1. Testeras / End Trucks
2. Viga Principal / Main Stream
3. Riel C / Rail C
4. Polipasto de 3 ton / 3 Ton Hoist
5. Motor Testera / End Truck Motor
6. Parachoque / Bumper

Model/Modelo	PWMS8T
Capacity	17637 lb / 8000 kg
Capacidad	
Lifting Height	39 ft / 12 m
Altura de Izaje	
Speed (per min)	2.6 - 16.4 ft / 0.8 - 5 m
Velocidad (por min)	
Traveling Speed (per min)	16.4 - 65.6 ft / 5 - 20 m
Velocidad Desplazamiento (por min)	
Lifting Motor	1.5/9.5 kW
Motores de Izaje	
Traveling Motor	0.37 kW x2
Motores Desplazamiento	
Duty Class	M5
Clase de Servicio	



Model/Modelo	PWLH8T
Capacity	17637 lb / 8000 kg
Capacidad	
Length	28.5 ft / 8.7 m
Longitud	
Traveling Length	70 ft / 21.3 m
Distancia Desplazamiento	
Rail Gage Distance	66.9 in / 1700 mm
Ancho de la Viga	
Duty Class	M4
Clase de Servicio	



Model/Modelo	PWSP8T
Capacity	17637 lb / 8000 kg
Capacidad	
Length	9.8 ft / 3 m
Longitud	
Traveling Speed (per min)	13/65.6 ft 4/20m
Velocidad Desplazamiento (por min)	
Motor Power	0.75 kW
Potencia Motor	
Gear Diameter	8.46 in / 215 mm
Diámetro Engranaje	
Duty Class	M4
Clase de Servicio	

Country / Pais	Triphase / Trifasico
Argentina	380V @ 50Hz
Chile	380V @ 50Hz
Colombia	220V/440v @ 60Hz
Costa Rica	220V/440v @ 60Hz
Mexico	220V/440v @ 60Hz
Peru	220V/440v @ 60Hz
USA	220V/440v @ 60Hz

Check for options / Consulte por opciones