



30 Tons Double Girder Top Running Overhead Crane

Key features

- Load Capacity: Capable of lifting up to 30 tons, making it suitable for demanding industrial tasks.
- Top Running Configuration: Optimizes vertical clearance and facilitates smooth movement along the runway, increasing operational efficiency.
- Versatile Applications: Perfect for manufacturing facilities, warehouses, and construction sites where heavy lifting is essential.
- 3 Year Warranty, Customer Support and Service in the USA

The 30 Tons Double Girder Top Running Overhead Crane Description

The 30 Tons Double Girder Top Running Overhead Crane is engineered for heavy-duty lifting in industrial environments, offering superior strength and stability. This crane is ideal for transporting large and heavy loads, ensuring efficiency and safety in various applications.

Technical Specifications

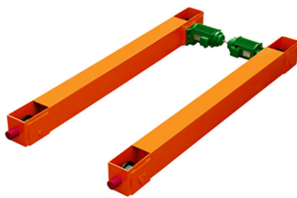
Warranty	3 Year
----------	--------



Model/Modelo	PWMS30T
Capacity Capacidad	70548 lb / 32000 kg
Speed Velocidad	2.6 - 11 ft / 0.58 - 3.3 m
Traveling Speed (per min) Velocidad Desplazamiento (por min)	16.4 - 65.6 ft / 5 - 20 m
Lifting Motor Motores de Izaje	1 - 6.1 kW
Traveling Motor Motores Desplazamiento	1.1 kW x 2
Lifting Height Altura de Izaje	19.6 ft / 6 m
Duty Class Clase de Servicio	M5

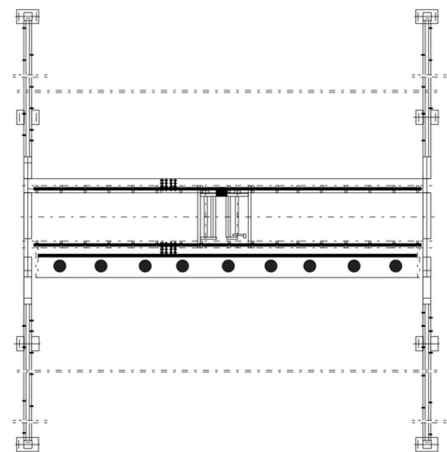
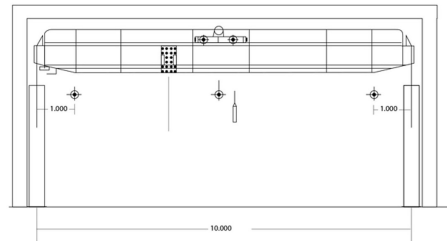
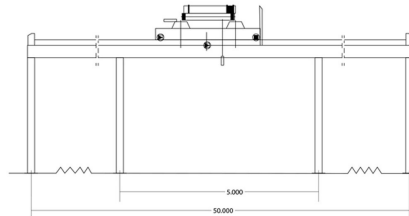
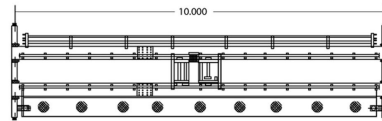
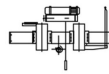
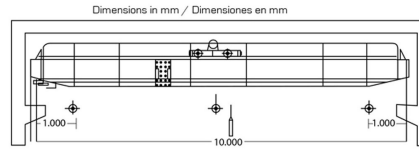


Model/Modelo	PVLH30T
Capacity Capacidad	66138 lb / 30000 kg
Length Longitud	33 ft / 10 m
Traveling Length Distancia Desplazamiento	164 ft / 50 m
Rail Gage Distance Ancho de la Viga	70.8 in / 1800 mm
Duty Class Clase de Servicio	M4



Model/Modelo	PWSP30T
Capacity Capacidad	66138 lb / 30000 kg
Length Longitud	11 ft / 3.5 m
Speed (per min) Velocidad (por min)	65.6/13 ft 20/4 m
Motor Power Potencia Motor	2.2 kW
Gear Diameter Diámetro Engranaje	16.5 in / 420 mm
Duty Class Clase de Servicio	M4

Standard ASME B30.2 / ANSI Z535.4 / ANSI / ASCE 7-88 /
Norma ANSI Z244.1 / ANSI AA1264.1 / ANSI / SAE Z26.1 /
ANSI A14.3 CMAA No. 70-2000 / AISE No.6
Warranty: 3 Year / Certification valid for 1 year / 10 year parts and service availability
Garantía: 3 Años / Certificación válida por 1 año / 10 Años disponibilidad de piezas y servicio



Imágenes Referenciales