



Fixed Pulley Diameter 756mm for 42mm cable 50Tons F. 4 to 1

Key features

- Load Capacity: Supports impressive loads up to 50 tons, making it ideal for demanding industrial applications.
- Pulley Diameter: The 756mm diameter ensures smooth operation, reducing friction and wear on the cable for increased longevity.
- Mechanical Advantage: Offers a 4:1 mechanical advantage, allowing for easier lifting and improved control of heavy loads.
- 3 Year Warranty, Customer Support and Service in the USA

Fixed Pulley Diameter 756mm for 42mm cable 50Tons F. 4 to 1 Description

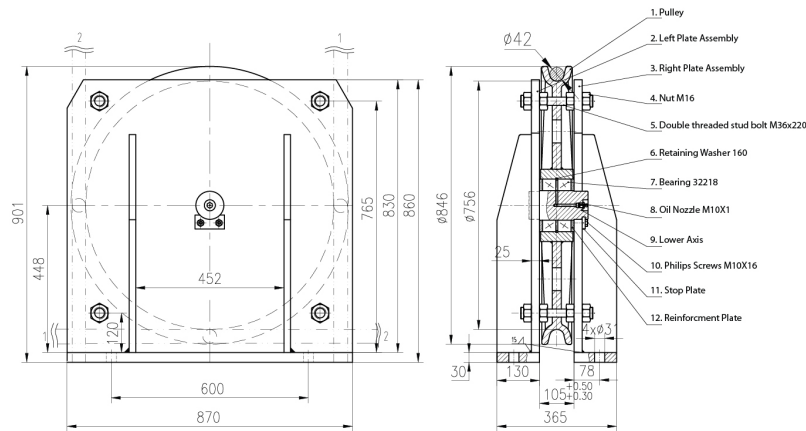
The Fixed Pulley with a Diameter of 756mm is engineered for heavy-duty lifting tasks, with the capability to support loads up to 50 tons. This durable pulley is designed for use with 42mm cables and features a 4:1 mechanical advantage, enhancing lifting efficiency and reducing the physical effort required for heavy loads.

Prowinch Snatch Blocks Pulleys

All of our **Snatch Blocks Pulleys** are created with the goal of offering the best quality and performance. Key components such as lifespan factors are constantly tested and improved in order to offer the best product for the price.

Technical Specifications

Rated Load Capacity	110231 lb / 50000 kg	Standards Compliance	Meets or exceeds All ASME B30.26 - 2020 requirements
Pulley Diameter	Ø28 in / Ø700 mm	Warranty	3 Year
Safety Factor	5:1		



Unit Weight & Dimensions

A Total Height	28 in
W Width	26 in
D Depth	5 in

Packaging Weight & Dimensions

Package 1 Gross Weight	516 lbs / 234 Kg
Package 1 Width	26 in / 66.04 cm
Package 1 Length	5 in / 12.7 cm
Package 1 Height	28 in / 71.12 cm