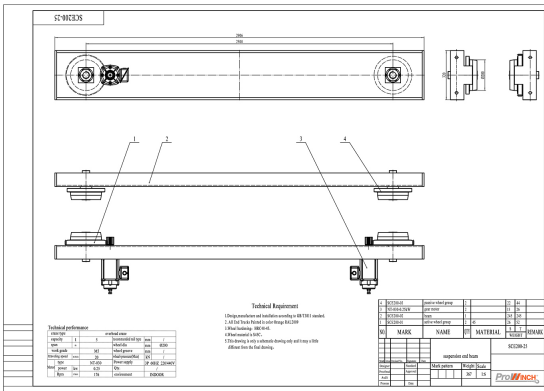


# 5 Ton Underhung Motorized End Trucks Single Girder up to 57ft Span 220/440V 3P

## Key features

- Load Capacity: Supports up to 5 tons, perfect for heavy lifting needs.
- Power Supply: Operates on 220/440V 3-phase power, ensuring consistent and dependable motorized performance.
- Versatile Applications: Ideal for warehouses, manufacturing facilities, and other industrial applications where efficient lifting solutions are essential.
- 3 Year Warranty, Customer Support and Service in the USA

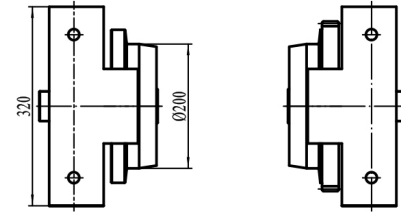
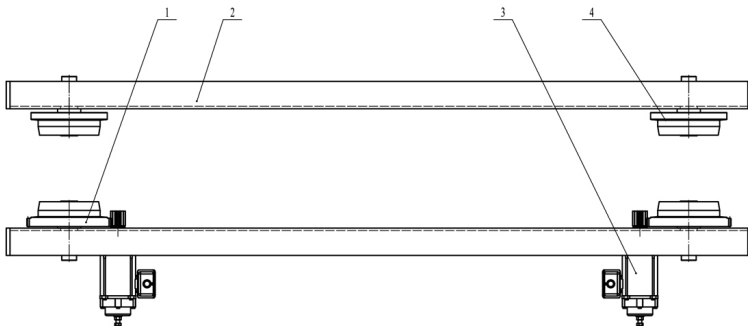
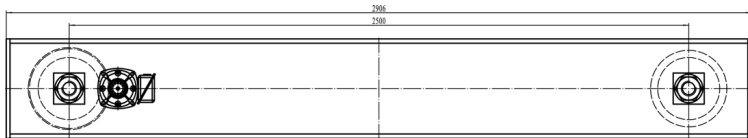


## The 5 Ton Underhung Motorized End Trucks Description

The 5 Ton Underhung Motorized End Trucks are engineered for single girder applications, accommodating spans of up to 57 feet. Designed for use with a 220/440V 3-phase power supply, this system ensures reliable and efficient operation for various overhead lifting tasks in industrial settings.

## Technical Specifications

|                            |                                   |                                  |   |
|----------------------------|-----------------------------------|----------------------------------|---|
| <b>Rated Load Capacity</b> | 5 ton                             | <b>Motor Brake</b>               | Yes   |
| <b>Speed (f/m) / min</b>   | 66 ft                             | <b>IEC Motor Protection</b>      | IP54  |
| <b>Number of Speeds</b>    | 1 Speed - Optional Variable Speed | <b>Variable Frequency Driver</b> | Optional 1.5 Kw   |
| <b>Voltage</b>             | 3 Phase 220~240/440~480V 60Hz     | <b>Dynamic Brake</b>             | Only with VFD Optional  |
| <b>Total Power Watts</b>   | 0.25Kw x 4                        | <b>Control</b>                   | Not Included. Optional single Speed, 2 Speed and Variable Speed |
| <b>Max. Span</b>           | 53 ft                             | <b>I-Beam Width Range</b>        | 130 - 400 (5.11 - 15.74 in)                                     |
| <b>Material</b>            | Steel                             | <b>Standards Compliance</b>      | ASME / CMAA / Nch   |
| <b>Duty Class</b>          | H4/M5/2m/Class D                  | <b>Warranty</b>                  | 3 Year  |



## Unit Weight & Dimensions

|                         |         |
|-------------------------|---------|
| <b>End-Truck Length</b> | 2500 mm |
|-------------------------|---------|

## Packaging Weight & Dimensions

|                               |                  |
|-------------------------------|------------------|
| <b>Package 1 Gross Weight</b> | 780 lbs / 354 Kg |
|-------------------------------|------------------|