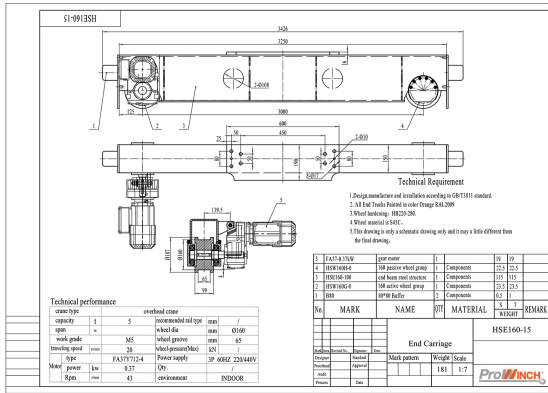


# 5 Ton Top Running Motorized End Trucks Single Girder up to 34ft Span 220/440V 3P

## Key features

- **Load Capacity:** Supports up to 5 tons, ideal for heavy lifting requirements in industrial settings.
- **Power Supply:** Functions on 220/440V 3-phase power, ensuring consistent and reliable motorized performance.
- **Versatile Applications:** Suitable for use in warehouses, manufacturing plants, and other heavy-duty industrial environments.
- **3 Year Warranty, Customer Support and Service in the USA**

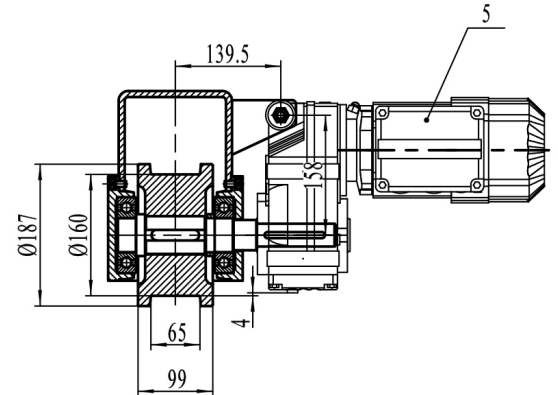
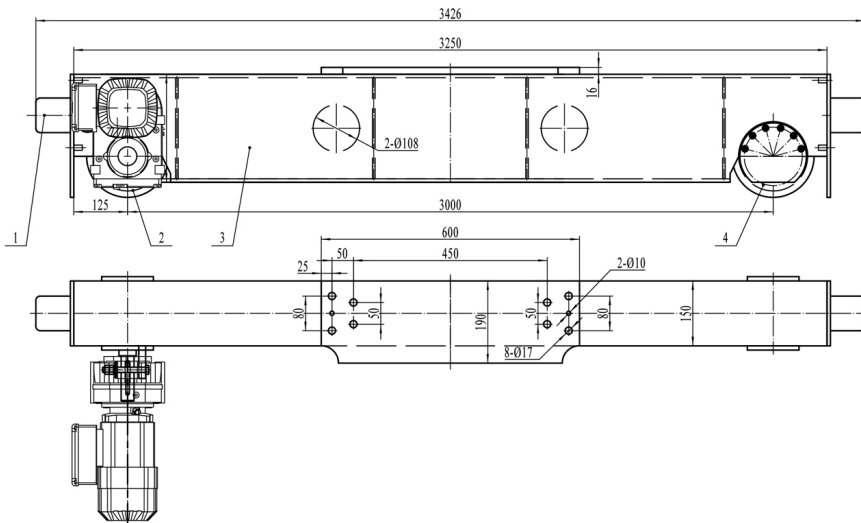


## The 5 Ton Top Running Motorized End Trucks Description

The 5 Ton Top Running Motorized End Trucks are designed for single girder applications, accommodating spans of up to 34 feet. Operating on a 220/440V 3-phase power supply, this system delivers reliable and efficient performance for a variety of overhead lifting tasks.

## Technical Specifications

<b>Rated Load Capacity</b>	5 Ton	<b>Motor Brake</b>	Yes
<b>Speed (f/m) / min</b>	66 ft	<b>IEC Motor Protection</b>	IP54
<b>Number of Speeds</b>	1 Speed - Optional Variable Speed	<b>Variable Frequency Driver</b>	Optional 1.1 Kw
<b>Voltage</b>	3 Phase 220~240/440~480V 60Hz	<b>Dynamic Brake</b>	Only with VFD Optional
<b>Total Power Watts</b>	0.37 x 2	<b>Control</b>	Not Included. Optional single Speed, 2 Speed and Variable Speed
<b>Max. Span</b>	30 Ft	<b>I-Beam Width Range</b>	Any
<b>Material</b>	Steel	<b>Standards Compliance</b>	ASME / CMAA / Nch
<b>Duty Class</b>	H4/M5/2m/Class D	<b>Warranty</b>	3 Year



## Unit Weight & Dimensions

<b>End-Truck Length</b>	1500 mm
-------------------------	---------