

## 2 Ton Top Running Motorized End Trucks Single Girder up to 34ft Span 220/440V 3P



### Key features

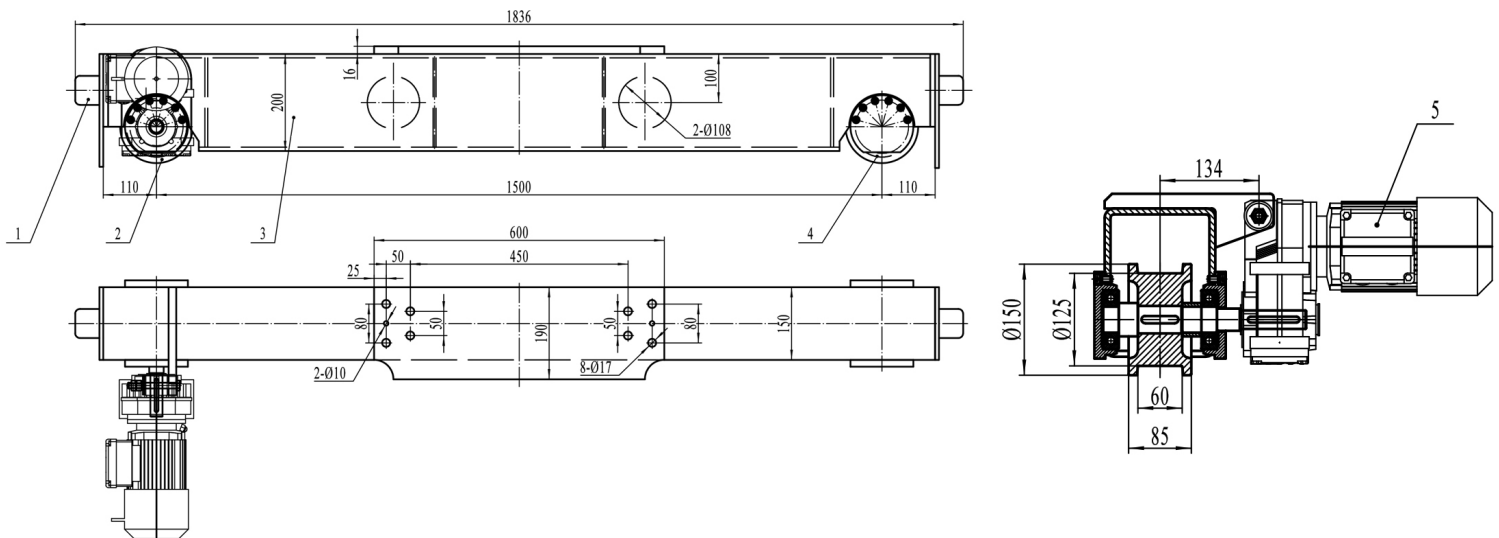
- Load Capacity: Supports up to 2 tons, ideal for moderate lifting tasks in industrial settings.
- Power Supply: Operates on 220/440V 3-phase power, delivering consistent and reliable motorized performance.
- Versatile Applications: Suitable for warehouses, manufacturing facilities, and other light to moderate industrial applications.
- 3 Year Warranty, Customer Support and Service in the USA

### The 2 Ton Top Running Motorized End Trucks Description

The 2 Ton Top Running Motorized End Trucks are designed for single girder configurations, accommodating spans of up to 34 feet. This system operates on a 220/440V 3-phase power supply, ensuring efficient and reliable performance for various overhead lifting applications.

## Technical Specifications

<b>Rated Load Capacity</b>	2 Ton	<b>Motor Brake</b>	Yes
<b>Speed (f/m) / min</b>	66 ft	<b>IEC Motor Protection</b>	IP54
<b>Number of Speeds</b>	1 Speed - Optional Variable Speed	<b>Variable Frequency Driver</b>	Optional 1.1 Kw
<b>Voltage</b>	3 Phase 220~240/440~480V 60Hz	<b>Dynamic Brake</b>	Only with VFD Optional
<b>Total Power Watts</b>	0.25 x 2	<b>Control</b>	Not Included. Optional single Speed, 2 Speed and Variable Speed
<b>Max. Span</b>	40 Ft	<b>I-Beam Width Range</b>	Any
<b>Material</b>	Steel	<b>Standards Compliance</b>	ASME / CMAA / Nch
<b>Duty Class</b>	H4/M5/2m/Class D	<b>Warranty</b>	3 Year



## Unit Weight & Dimensions

<b>End-Truck Length</b>	1500 mm
<b>Total Unit Weight</b>	670 lbs / 304 Kg

## Packaging Weight & Dimensions

<b>Package 1 Net Weight</b>	670 lbs / 304 Kg
<b>Package 1 Width</b>	34 in / 86.36 cm
<b>Package 1 Gross Weight</b>	731 lbs / 332 Kg
<b>Package 1 Height</b>	20 in / 50.8 cm
<b>Package 1 Length</b>	77 in / 195.58 cm