

7 tons 15432 lbs Air Winch

Key features

- Heavy Duty Pneumatic Winch, 7t first layer capacity, 5.3t last layer capacity. 150 meters wire rope (492 ft)
- Two Independent Automatic Brakes, inner Disc Brake on the reducer and Band Brake on the Drum
- This winch is widely used for drilling platform, marines, minings, engineering sites, etc. to pull heavy cargo. Reliable operation under inflammable and explosive environment.
- 3 Year Warranty, Customer Support and Service in the USA

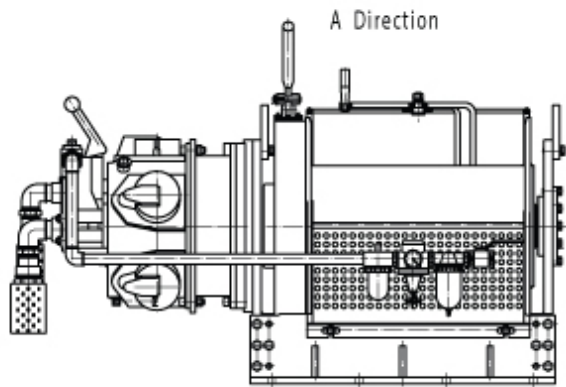
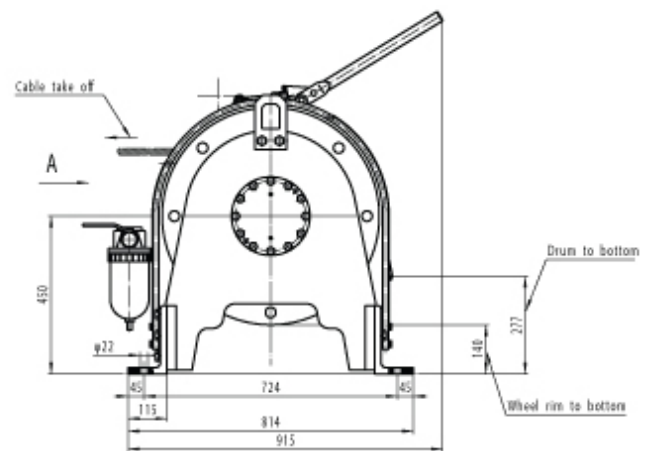
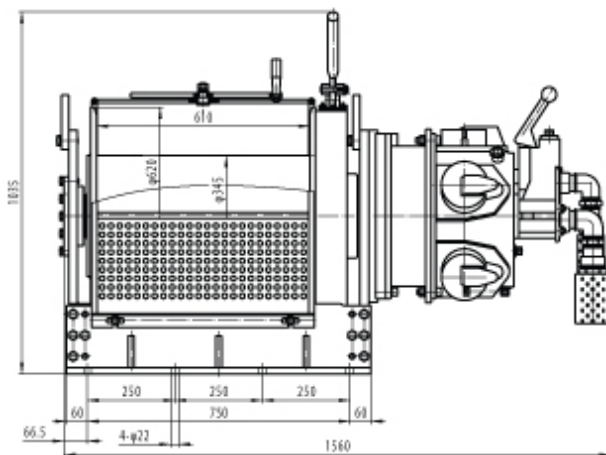


Winch Description

This versatile 7-ton (15,432 lbs) air winch provides strong lifting capability with a first layer capacity of 5 tons (11,000 lbs) and supports a reduced capacity on the last layer. Designed for efficient and reliable operation, it is ideal for heavy-duty lifting and pulling tasks in industrial settings, ensuring smooth performance across different load levels.

Technical Specifications

1st Layer Rated Capacity	15432 lb / 7000 kg	Drum Brake	Automatic Band Brake
Speed (f/m) / min	0 ~ 32.8 ft/min / 0 ~ 10 m/min	Free Spooling Clutch Type	No
Number of Speeds	Variable Speed	Wire Rope	ø 3/4 (x 492 ft) / ø 19mm (x 150 m)
Motor Type (68)	Piston Air Motor (5 x 130mm)	Humidity	≤90%
Control	Lever Throttle / Palanca de Aceleración	Standards Compliance	ASME B30.7/GB/T5359-2010/ANSI/EN 14492-1
Transmission / Reducer Type	2 Stage Planetary Gear	Warranty	3 Year



Layer	Pulling Force	Rope Storage	Rope Speed
1	7t - 15432 lbs	36 m - 118 ft	6 m/min - 19.6 ft/min
2	6.3t - 13889 lbs	75 m - 246 ft	4.8 m/min - 15.7 ft/min
3	5.7t - 12566 lbs	119 m - 390 ft	3.8 m/min - 12.46 ft/min
4	5.3t - 11684 lbs	166 m - 544 ft	3.1 m/min - 10.17 ft/min

Unit Weight & Dimensions

A Total Height	1100 mm
Drum BD Barrel Diameter (58)	345 mm
D Depth	1000 mm
Drum FD Flange Diameter (57)	620 mm
W Width	1600 mm

Packaging Weight & Dimensions

Package 1 Net Weight	1851 lbs / 840 Kg
Package 1 Gross Weight	1971 lbs / 894 Kg

Drum DL Length (56)	610 mm
Total Unit Weight	1851 lbs / 840 Kg