



10 Ton Hydraulic Winch Incorporated Roller 20000 lbs. Light Duty 12V Wired/Wireless Control

Key features

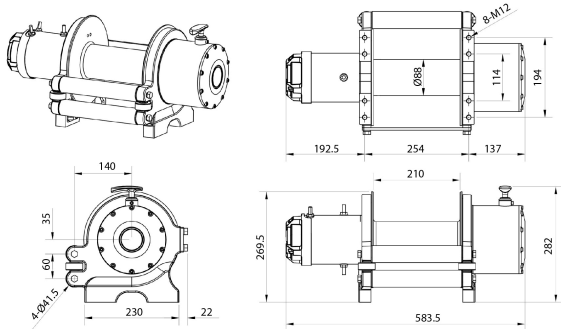
- Load Capacity: 10 Ton (20,000 lbs), capable of handling substantial weights in light-duty applications.
- 12V Power: Operates on a 12V DC system, which is compatible with many standard power sources and vehicles.
- Wireless Control: Allows for remote operation, offering flexibility and convenience.
- 3 Year Warranty, Customer Support and Service in the USA

Winch Description<

This versatile 10 Ton Hydraulic Winch offers a 20,000 lbs capacity and light-duty performance, featuring both 12V wired and wireless control options. Designed for flexibility and ease of use, it ensures reliable operation for various lifting and pulling tasks. Ideal for applications requiring both convenient remote handling and direct control.

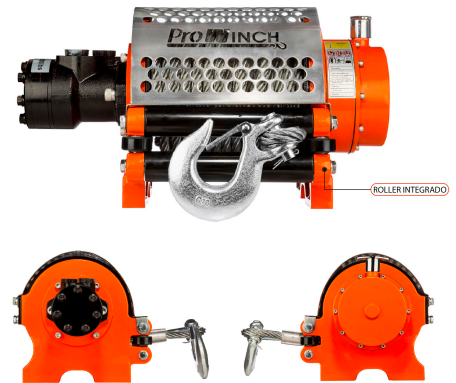
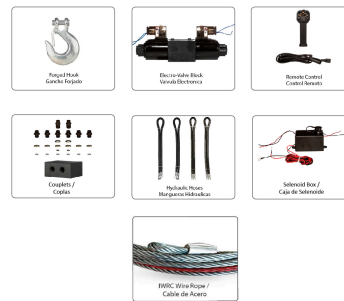
Technical Specifications

1st Layer Rated Capacity	20000 lb / 9000 Kg	Transmission / Reducer Type	2 Stages Planetary / 2 Etapas Planetario
Speed (f/m) / min	14~19 ft / 5~5.7 m	Gear Ratio	33:1
Number of Speeds	1 Speed - Optional Variable Speed	Drum Brake	YES
Capacity Range	7	Free Spooling Clutch Type	Manual
FCC ID	WTX20X04015023E	Wire Rope	ø1/2 in x 78 ft ø13 mm x 24 m
Motor/Engine Type	Hydraulic w/ Counterbalance valve	Recommended Wire Rope	REMOVE FIELD
IEC Motor Protection	IP67	Standards Compliance	SAE-J706
Control	Wireless w/ 12 V Electro Valve Block	Warranty	3 Year



Dimensions in mm / Dimensiones en mm

INCLUDED / INCLUIDO



Unit Weight & Dimensions

A Total Height	223 mm	Package 1 Net Weight	190 lbs / 86 Kg
W Width	540 mm	Package 1 Width	18 in / 45.72 cm
D Depth	196 mm	Package 1 Gross Weight	178 lbs / 81 Kg
DL Drum Length	220 mm	Package 1 Height	19 in / 48.26 cm
Total Unit Weight	190 lbs / 87 Kg	Package 1 Length	27 in / 68.58 cm

Packaging Weight & Dimensions