



20000 lbs Electric Waterproof Winch Wire Rope 24V Wireless

Key features

- Load Capacity: Rated to pull 20,000 lbs, perfect for heavy-duty tasks such as vehicle recovery, industrial lifting, or off-road use.
- 24V DC Power: Powered by a 24V DC system, offering increased power efficiency for larger vehicles and equipment.
- Waterproof Construction: Designed to perform in wet and extreme conditions, ensuring durability in outdoor environments.
- 1 Year Warranty, Customer Support and Service in the USA

Winch Description

This Prowinch 20,000 lbs 24V Electric Winch offers an excellent combination of power and performance. The strong, durable, IP67 waterproof winch allows you to complete even the most difficult jobs with ease. The IP67 waterproof rating allows you to use the winch even in adverse conditions.

Prowinch 24V Electric Winch

All of our **AC electric winches** are created with the goal of offering the best price-performance ratio. Key components such as lifespan factors are constantly tested and improved in order to offer the best product for the price.

Key Components

All internal components have been upgraded to meet the highest quality standards. Final assembly and all tests are performed locally at Prowinch facility before shipping to ensure that every unit meets the corresponding standard.

Control System

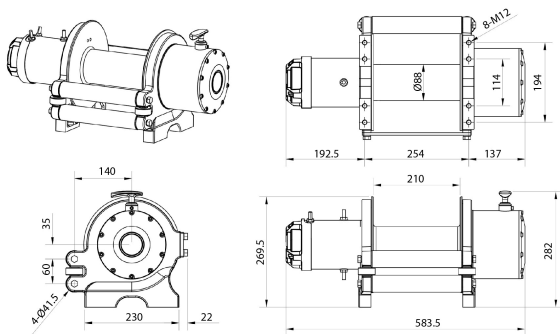
These winches feature a unique remote control design, which allows the winch to be operated wired or wirelessly.

Braking System

Automatic brake system designed to automatically engage immediately upon any loss of power.

Technical Specifications

1st Layer Rated Capacity	20000 lbs	Control Voltage	24 V
Number of Layers	4	Electric Control Box	Reverse Solenoid Control Box
Speed (f/m) / min	3.4~17 ft / 1~5 m	Transmission / Reducer Type	4-Stage Planetary
Number of Speeds	1 Speed	Gear Ratio	544:1
Voltage	Battery Power 24 VDC	Drum Brake	Automatic
FCC ID	2ASYP-DW12K	Free Spooling Clutch Type	Sliding Ring Gear
Motor Type (68)	DC Series Wound Motor	Wire Rope	SteelSteel \varnothing 9/16 in x 85 ft \varnothing 14 mm x 26 m
Motor AMP	323 AMP	Fairlead	Included
IEC Motor Protection	IP67	Accessories	Control and Installation Hardware
Control	Wireless and Wired	Warranty	1 Year



Dimensions in mm / Dimensiones en mm

INCLUDED / INCLUIDO



OPTIONAL / OPCIONAL



Unit Weight & Dimensions

A Total Height	335 mm	Package 1 Net Weight	90 lbs / 41 Kg
Drum BD Barrel Diameter (58)	89 mm	Package 1 Width	19 in / 48.26 cm
D Depth	285 mm	Package 1 Gross Weight	182 lbs / 83 Kg
Drum DL Length (56)	228 mm	Package 1 Height	19 in / 48.26 cm
W Width	560 mm	Package 1 Length	25 in / 63.5 cm
Total Unit Weight	90 lbs / 41 Kg		

Packaging Weight & Dimensions