



Copyright: The pictures contained in this site belong to Prowinch LLC and are protected by copyright under national and international law. This information may not be reproduced, adapted or modified without the written consent of Prowinch LLC. The use of these images and texts implies that you should mention Prowinch LLC as owner. By consulting this site or downloading any information you agree to these conditions.

Manual Jib Crane 1100 lbs. 15.4 ft. Height 14 ft. Span 12 ft. Standard Lifting Height

Key features

- Load Capacity: Supports up to 1100 lbs, ideal for medium to heavy lifting tasks.
- Durable Construction: Made from high-quality materials for stability and long-lasting performance.
- Versatile Applications: Suitable for workshops, warehouses, and manufacturing environments.
- 3 Year Warranty, Customer Support and Service in the USA

Manual Jib Crane 1100 lb Description

The Manual Jib Crane is a reliable lifting solution designed for heavy-duty applications, supporting loads of up to 1100 lbs. With a maximum height of 15.4 feet and a span of 14 feet, this crane is perfect for various industrial and workshop settings. Its standard lifting height allows for efficient handling of materials, making it an essential tool for enhancing productivity.

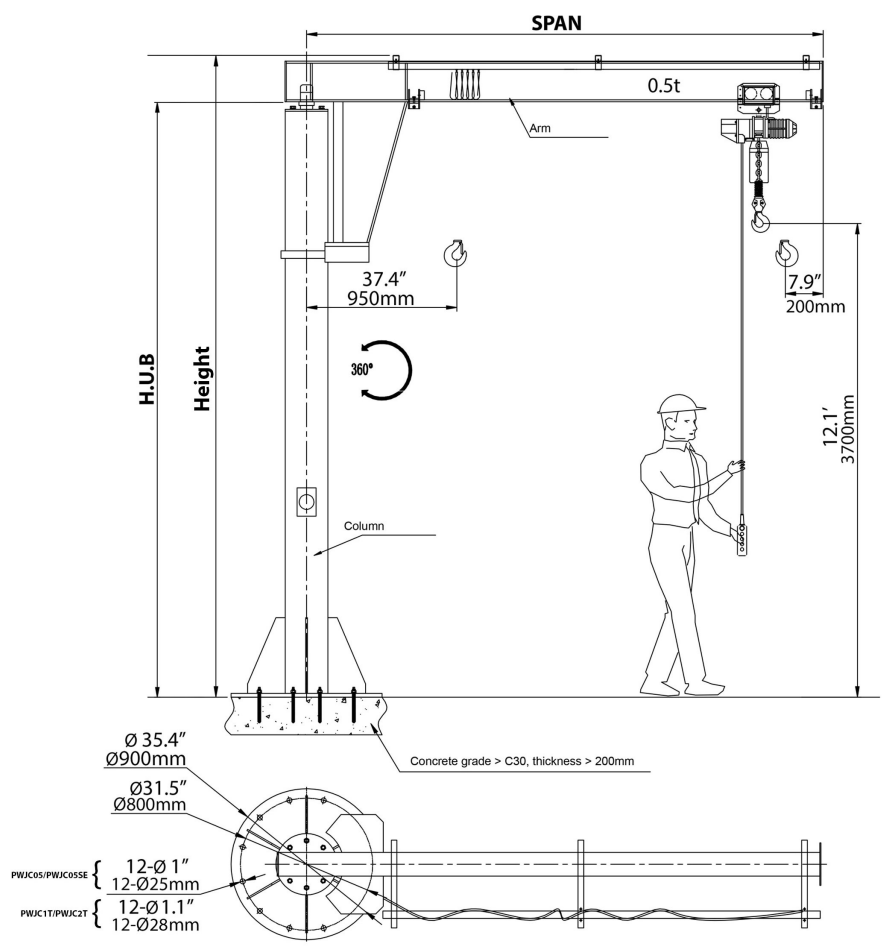
Technical Specifications

Warranty	3 Year
----------	--------

Model/Modelo	PWJC05T	PWJC05TSE	PWJC1T	PWJC2T
Capacity (lb)	1000	1000	2200	2400
Capacidad (kg)	500	500	1000	2000
Standard lifting height (ft)	12.1	12.1	12.1	12.1
Altura estándar de elevación (m)	3.7	3.7	3.7	3.7
Span (ft)	12.1	14.1	12.1	12.1
Dimensiones de la viga (m)	3.7	4.3	3.7	3.7
Total Height (ft)	15.4	15.4	15.7	15.7
Altura Total (mm)	4700	4700	4800	4800
H.U.B (ft)	14.4	14.4	14.6	14.4
Altura bajo la viga (mm)	4400	4400 <td 4454	4400	
Rotation	360°	360°	360°	360°
Rotación	360°	360°	360°	360°
Column diameter (in)	12.8	12.8	14	16.8
Diámetro de mastil (mm)	325	325	356	426

Warranty: 3 Year / Certification valid for 1 year / 10 Year Parts and Service Availability
 Garantía: 3 Años / Certificación válida por 1 año / 10 Años disponibilidad de piezas y servicio

Note / Nota: Not include hoist / No incluye tecele



Unit Weight & Dimensions

Total Unit Weight	2249 lbs / 1021 Kg
--------------------------	--------------------

Packaging Weight & Dimensions

Package 1 Net Weight	2249 lbs / 1020 Kg
-----------------------------	--------------------

Package 1 Width	39 in / 99.06 cm
------------------------	------------------

Package 1 Gross Weight	2249 lbs / 1020 Kg
-------------------------------	--------------------

Package 1 Height	100 in / 254 cm
-------------------------	-----------------

Package 1 Length	180 in / 457.2 cm
-------------------------	-------------------