



30T Hydraulic Winch 22 m/min

Key features

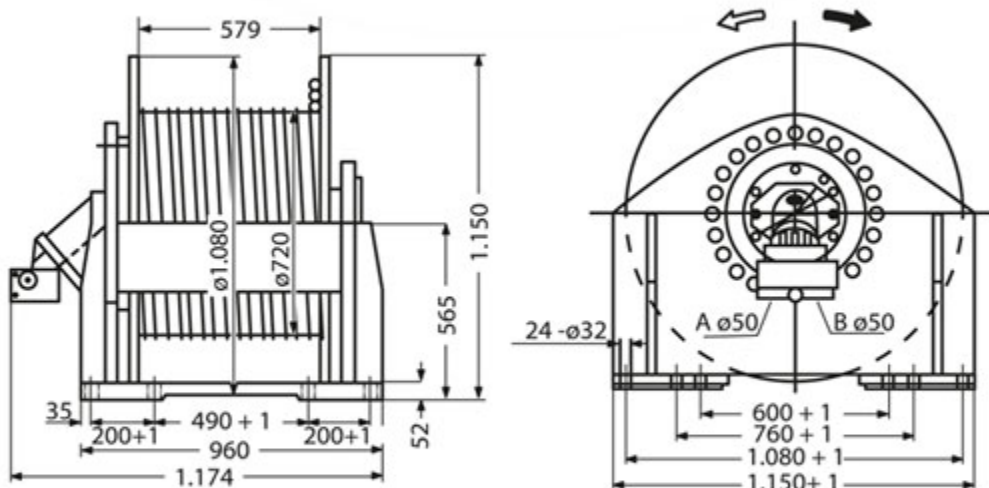
- 3 Year Warranty, Customer Support and Service in the USA

Winch Description

Hydraulic Winches are essential for pulling hefty loads without the physical work. This is the performance the equipment reaches with standard rope provided. The Highest Quality, most Technologically Advanced Winches in the Industry. This winch can pull a load of 66140 lb at 2 variable speeds within different layers

Technical Specifications

1st Layer Rated Capacity	66139 lb / 30000 kg	Oil Pressure	30 MPa
Speed /min	49-72 ft / 15-22 m	Oil Flow	313 L/min
Number of Speeds	2 Variable Speed	Recommended Wire Rope	ø1 1/2 in x 328 ft ø36 mm x 100m
Motor/Engine Type	Hydraulic Motor A2Fe180/6 IWYZL10	Warranty	3 Year
IEC Motor Protection	IP67		



Dimensions in mm / Dimensiones en mm

Imágenes Referenciales