



30 Ton Crane Scale Light Alloy IP67

Key features

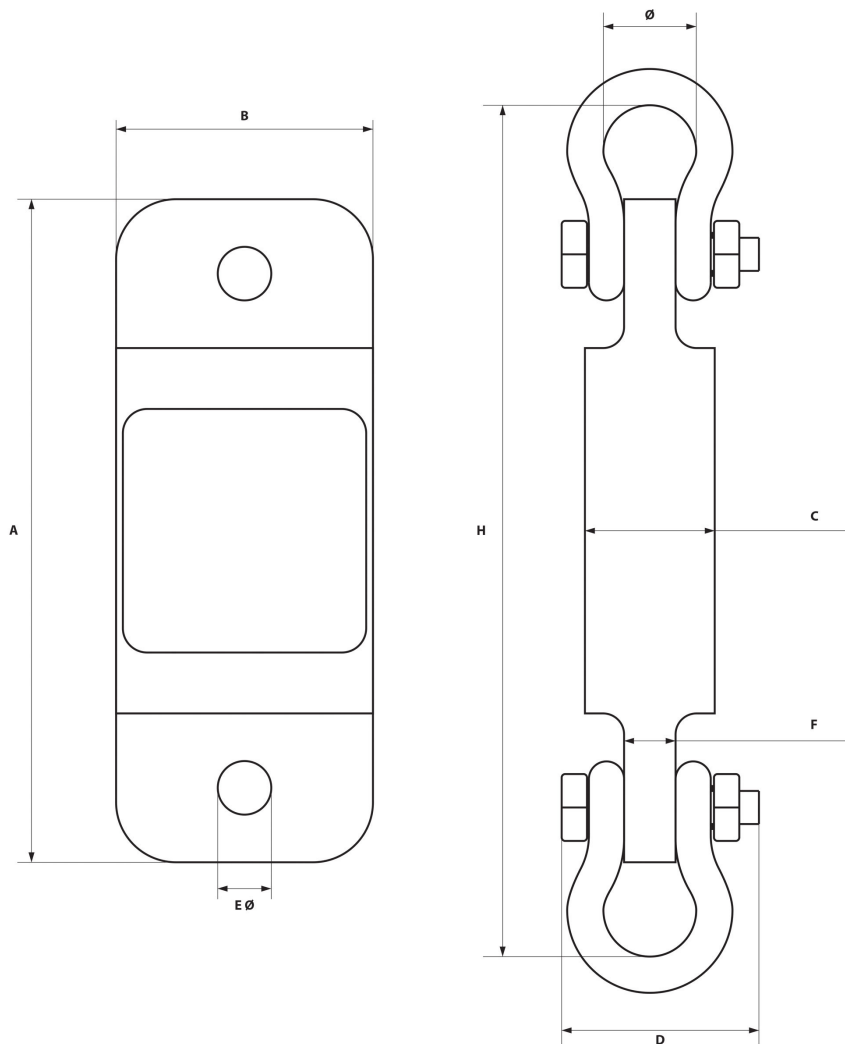
- **30 Ton Capacity:** Capable of weighing loads up to 66,000 lbs with high accuracy, ideal for large-scale industrial operations.
- **Light Alloy Construction:** Crafted from a durable yet lightweight alloy for ease of use and enhanced portability without sacrificing strength or safety.
- **IP67 Rating:** Provides complete dust-tight protection and resistance to water immersion, ensuring durability in the harshest working conditions.
- **3 Year Warranty, Customer Support and Service in the USA**

30 Ton Crane Scale Light Alloy IP67 Description

The 30 Ton Crane Scale Light Alloy IP67 is a top-tier industrial weighing tool designed to handle extremely heavy loads with precision and safety. Built with a lightweight yet high-strength alloy, this crane scale can support loads up to 30 tons (66,000 lbs), making it indispensable in industries requiring heavy-duty material handling. The IP67 rating guarantees protection against dust and water, making it perfect for outdoor and tough industrial environments.

Technical Specifications

Rated Load Capacity	66000 lb / 30 ton	Minimum Weight	440 lb / 200 kg
Accuracy Grade	Grade III / n=3000	Receiver Power Supply	3 Battery (pilas) AA 1.5V
Scale Interval	1/2/5/10/20/50 lb/kg	Operating Temperature Range	4° - 122 °F / -20° - 50° C
Sample Rate (per sec)	80 times/veces	Warranty	3 Year



Model / Modelo	PWHYCS1T	PWHYCS5T	PWHTCS10T	PWHYCS20T	PWHYCS30T	PWHYCS50T
A	9 5/8 in 244.5 mm	11 1/4 in 286 mm	12 1/3 in 318 mm	16.5 in 420 mm	16.5 in 420 mm	18.3 in 465 mm
B	3 3/4 in 95.3 mm	4 in 102 mm	4 1/2 in 114 mm	4.8 in 128 mm	5.4 in 138 mm	5.9 in 150 mm
C	1 7/8 in 47.6 mm	2 in 51 mm	1 7/8 in 48 mm	2.8 in 70 mm	3.1 in 80 mm	3.9 in 100 mm
D	2 13/16 in 71.4 mm	4 7/8 in 124 mm	6 1/2 in 165 mm	10.2 in 260 mm	11 in 280 mm	12 in 305 mm
Ø	1 3/8 in 34.9 mm	2 1/4 in 57 mm	3 1/4 in 83 mm	5 in 127 mm	5.7 in 146 mm	7.2 in 184 mm
H	12 in 304.8 mm	16 in 406 mm	19 1/2 in 495 mm	25.9 in 660 mm	29.1 in 740 mm	36.6 in 930 mm
EØ	13/16 in 19.6 mm	1 7/16 in 37 mm	1 7/6 in 37 mm			
F	3/4 in 19.04 mm	1 3/8 in 35 mm	1 7/8 in 48 mm			

Unit Weight & Dimensions

Total Unit Weight	39 lbs / 18 Kg
--------------------------	----------------

Packaging Weight & Dimensions

Package 1 Net Weight	39 lbs / 18 Kg
-----------------------------	----------------

Package 1 Width	28 in / 71.12 cm
------------------------	------------------

Package 1 Gross Weight	48 lbs / 22 Kg
-------------------------------	----------------

Package 1 Height	13 in / 33.02 cm
-------------------------	------------------

Package 1 Length	9 in / 22.86 cm
-------------------------	-----------------