



20 Ton Crane Scale Light Alloy IP67

Key features

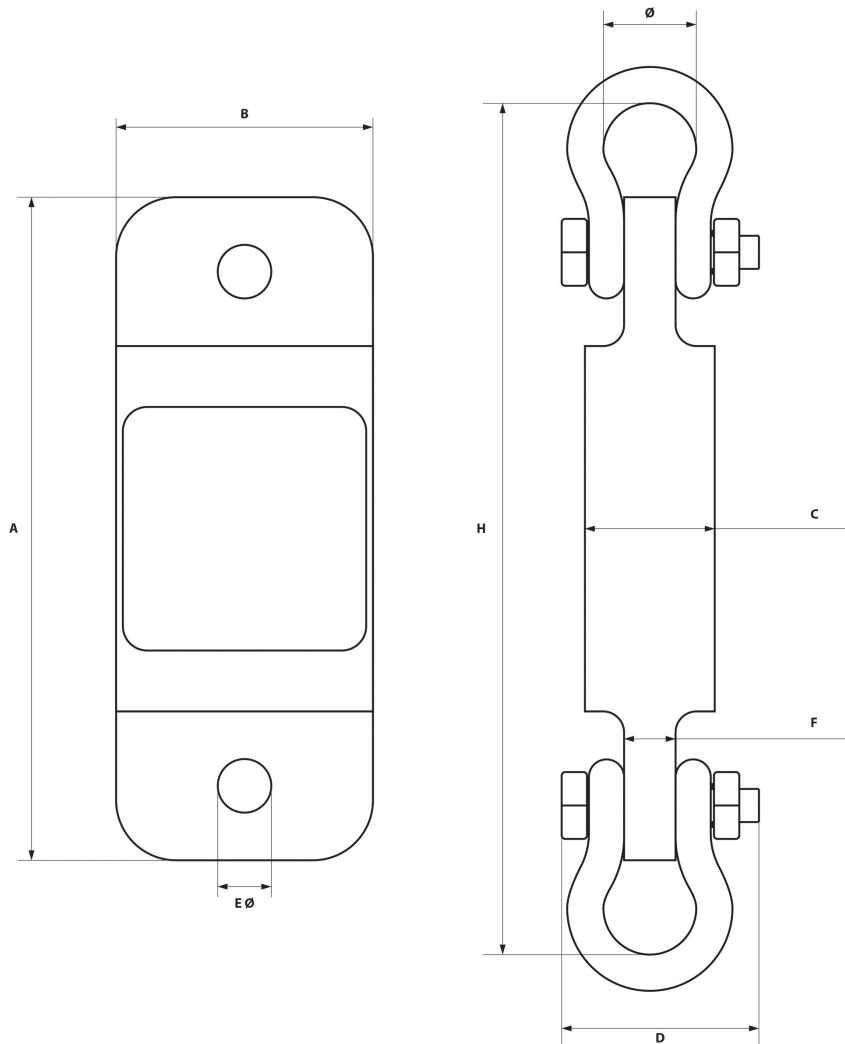
- **20 Ton Capacity:** Accurately weighs large loads up to 44,000 lbs, ideal for heavy industrial operations such as construction, shipping, and material handling.
- **Light Alloy Construction:** Lightweight, high-strength alloy material ensures ease of use while providing the durability needed for demanding applications.
- **IP67 Rating:** Superior protection against dust and water, ensuring long-lasting performance in challenging weather and work conditions.
- **3 Year Warranty, Customer Support and Service in the USA**

20 Ton Crane Scale Light Alloy IP67 Description

The 20 Ton Crane Scale Light Alloy IP67 is a robust, high-capacity weighing solution designed for heavy-duty industrial applications. Engineered with a lightweight yet durable alloy, this crane scale combines strength and precision, capable of safely weighing loads up to 20 tons (44,000 lbs). The IP67 rating ensures reliable performance in harsh environments, with full protection against dust and water exposure, making it ideal for both indoor and outdoor use.

Technical Specifications

Rated Load Capacity	44000 lb / 20 ton	Minimum Weight	440 lb / 200 kg
Accuracy Grade	Grade III / n=3000	Receiver Power Supply	3 Battery (pilas) AA 1.5V
Scale Interval	1/2/5/10/20/50 lb/kg	Operating Temperature Range	4° - 122 °F / -20° - 50° C
Sample Rate (per sec)	80 times/veces	Warranty	3 Year



Model / Modelo	PWHYCS1T	PWHYCS5T	PWHTCS10T	PWHYCS20T	PWHYCS30T	PWHYCS50T
A	9 5/8 in	11 1/4 in	12 1/3 in	16.5 in	16.5 in	18.3 in
	244.5 mm	286 mm	318 mm	420 mm	420 mm	465 mm
B	3 3/4 in	4 in	4 1/2 in	4.8 in	5.4 in	5.9 in
	95.3 mm	102 mm	114 mm	128 mm	138 mm	150 mm
C	1 7/8 in	2 in	1 7/8 in	2.8 in	3.1 in	3.9 in
	47.6 mm	51 mm	48 mm	70 mm	80 mm	100 mm
D	2 13/16 in	4 7/8 in	6 1/2 in	10.2 in	11 in	12 in
	71.4 mm	124 mm	165 mm	260 mm	280 mm	305 mm
Ø	1 3/8 in	2 1/4 in	3 1/4 in	5 in	5.7 in	7.2 in
	34.9 mm	57 mm	83 mm	127 mm	146 mm	184 mm
H	12 in	16 in	19 1/2 in	25.9 in	29.1 in	36.6 in
	304.8 mm	406 mm	495 mm	660 mm	740 mm	930 mm
EØ	13/16 in	1 7/16 in	1 7/6 in			
	19.6 mm	37 mm	37 mm			
F	3/4 in	1 3/8 in	1 7/8 in			
	19.04 mm	35 mm	48 mm			

Unit Weight & Dimensions

Total Unit Weight	52 lbs / 24 Kg
--------------------------	----------------

Packaging Weight & Dimensions

Package 1 Net Weight	52 lbs / 24 Kg
-----------------------------	----------------

Package 1 Width	31 in / 78.74 cm
------------------------	------------------

Package 1 Gross Weight	70 lbs / 32 Kg
-------------------------------	----------------

Package 1 Height	15 in / 38.1 cm
-------------------------	-----------------

Package 1 Length	19 in / 48.26 cm
-------------------------	------------------