

## 10 Ton Crane Scale Light Alloy IP67

### Key features



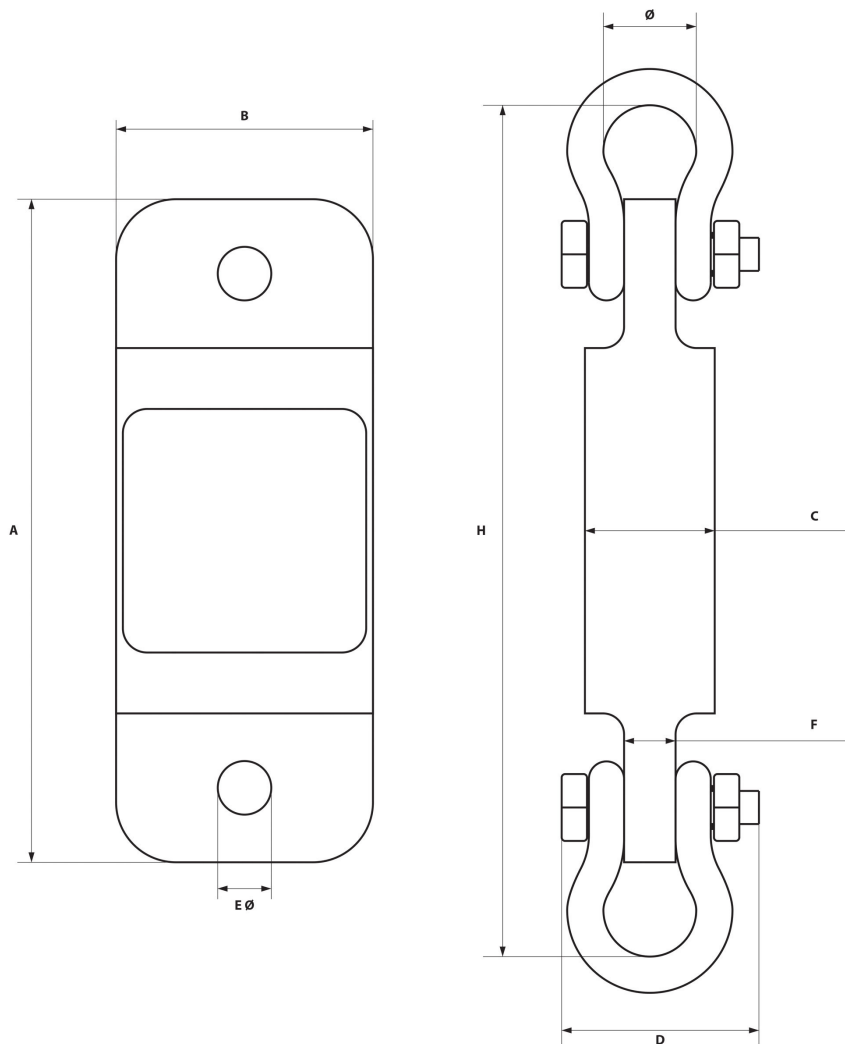
- 10 Ton Capacity: Handles loads up to 10 tons (22,000 lbs) with precision, making it perfect for demanding industrial applications.
- Light Alloy Construction: Made from a high-strength, lightweight alloy, providing durability without compromising portability.
- IP67 Rating: Fully protected against dust ingress and water immersion, ensuring reliable performance in tough environments.
- 3 Year Warranty, Customer Support and Service in the USA

### 10 Ton Crane Scale Light Alloy IP67 Description

The 10 Ton Crane Scale Light Alloy IP67 is a durable and highly accurate weighing solution, designed for heavy-duty industrial applications. Built with a lightweight yet robust alloy construction, this crane scale offers superior performance and portability, while its IP67 rating ensures protection against dust, water, and harsh environments. Ideal for lifting and weighing operations in warehouses, construction sites, and manufacturing plants.

## Technical Specifications

<b>Rated Load Capacity</b>	22000 lb / 10 ton	<b>Minimum Weight</b>	220 lb / 100 kg
<b>Accuracy Grade</b>	Grade III / n=3000	<b>Receiver Power Supply</b>	3 Battery (pilas) AA 1.5V
<b>Scale Interval</b>	1/2/5/10/20/50 lb/kg	<b>Operating Temperature Range</b>	4° - 122 °F / -20° - 50° C
<b>Sample Rate (per sec)</b>	80 times/veces	<b>Warranty</b>	3 Year



Model / Modelo	PWHYCS1T	PWHYCS5T	PWHTCS10T	PWHYCS20T	PWHYCS30T	PWHYCS50T
A	9 5/8 in	11 1/4 in	12 1/3 in	16.5 in	16.5 in	18.3 in
	244.5 mm	286 mm	318 mm	420 mm	420 mm	465 mm
B	3 3/4 in	4 in	4 1/2 in	4.8 in	5.4 in	5.9 in
	95.3 mm	102 mm	114 mm	128 mm	138 mm	150 mm
C	1 7/8 in	2 in	1 7/8 in	2.8 in	3.1 in	3.9 in
	47.6 mm	51 mm	48 mm	70 mm	80 mm	100 mm
D	2 13/16 in	4 7/8 in	6 1/2 in	10.2 in	11 in	12 in
	71.4 mm	124 mm	165 mm	260 mm	280 mm	305 mm
Ø	1 3/8 in	2 1/4 in	3 1/4 in	5 in	5.7 in	7.2 in
	34.9 mm	57 mm	83 mm	127 mm	146 mm	184 mm
H	12 in	16 in	19 1/2 in	25.9 in	29.1 in	36.6 in
	304.8 mm	406 mm	495 mm	660 mm	740 mm	930 mm
EØ	13/16 in	17/16 in	1 7/6 in			
	19.6 mm	37 mm	37 mm			
F	3/4 in	1 3/8 in	1 7/8 in			
	19.04 mm	35 mm	48 mm			

## Unit Weight & Dimensions

<b>Total Unit Weight</b>	26 lbs / 12 Kg
--------------------------	----------------

## Packaging Weight & Dimensions

<b>Package 1 Net Weight</b>	26 lbs / 12 Kg
-----------------------------	----------------

<b>Package 1 Width</b>	15 in / 38.1 cm
------------------------	-----------------

<b>Package 1 Gross Weight</b>	39 lbs / 18 Kg
-------------------------------	----------------

<b>Package 1 Height</b>	7 in / 17.78 cm
-------------------------	-----------------

<b>Package 1 Length</b>	9 in / 22.86 cm
-------------------------	-----------------