



## In Line Crane Scale 5 Ton Heavy Duty IP68 Water and Shockproof

### Key features

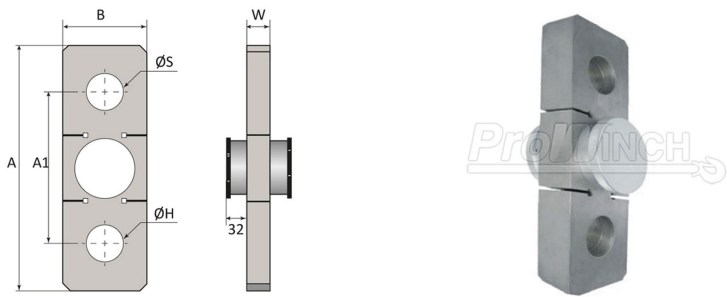
- Capacity: Accurately measures loads up to 5 tons, ideal for moderate lifting tasks in industrial settings.
- IP68 Rated: Water and dustproof design allows for operation in wet or dusty environments without compromising performance.
- Heavy-Duty Construction: Built to withstand heavy use, ensuring long-lasting reliability and durability.
- 3 Year Warranty, Customer Support and Service in the USA

### In Line Crane Scale 5 Ton Heavy Duty IP68 Water and Shockproof Description

The 5 Ton In-Line Crane Scale is engineered for precision and reliability in heavy-duty applications. With a capacity of up to 5 tons, this crane scale is ideal for a variety of industrial uses, including manufacturing, shipping, and construction. Its robust design ensures it withstands challenging environments, while the IP68 rating guarantees protection against water and dust intrusion. This scale is built to absorb shocks and impacts, making it a durable choice for frequent use in demanding settings.

## Technical Specifications

<b>Rated Load Capacity</b>	11000 lb / 5 ton	<b>Scale Interval</b>	1/2/5/10/20/50 lb/kg
<b>Accuracy Grade</b>	Grade III / n=3000	<b>Receiver Power Supply</b>	Battery 7.4v / 8.4v charger   Bateria 7.4v / Cargador 8.4v
<b>Wireless Frequency</b>	430-470 MHz (1000 ft/300m)	<b>Operating Temperature Range</b>	-22° - 158°F / -30° - 70° C
<b>A/D Conversion Rate (per sec)</b>	≥50 times / veces	<b>Warranty</b>	3 Year



Model / Modelo	PWHY5T	PWHY10T	PWHY25T	PWHY50T	PWHY100T
A	9 in / 230 mm	11 in / 280 mm	14.6 in / 370 mm	16.9 in / 430 mm	22.4 in / 570 mm
A1	6.3 in / 160 mm	7.4 in / 188 mm	9 in / 230 mm	10.2 in / 260 mm	5.4 in / 340 mm
B	3 in / 76 mm	3.5 in / 90 mm	0.9 in / 125 mm	5.9 in / 150 mm	8.3 in / 210 mm
W	1.3 in / 34 mm	1.8 mm / 47 mm	2.2 in / 55 mm	2.6 in / 65 mm	4.3 in / 108 mm
ØS	1.1 in / 28 mm	1.6 in / 40 mm	2.1 in / 53 mm	2.9 in / 73 mm	4.0 in / 102 mm
ØH	0.8 in / 21 mm	1.1 in / 28 mm	2.1 in / 53 mm	2.9 in / 73 mm	4.0 in / 102 mm

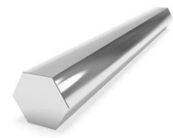
**OPTIONAL:**



**PWHY280**  
Simple remote control with Display/  
Control remoto simple con visor



**PWHY680**  
Remote control with printer and display/  
Control remoto con impresora y visor



**PH17-4**  
Precipitation hardening martensitic stainless steel with Cu and Nb/Cb additions.  
High corrosion resistance.  
Can be submerged in water for a long period of time /  
Acero inoxidable martensítico endurecido por precipitación con adiciones de Cu y Nb/Cb.  
Alta resistencia a la corrosión.  
Puede ser sumergido en agua por un largo periodo de tiempo

Nominal Size / Dimensión Nominal	Capacity of Load Cell / Capacidad de la Celda de Carga	WLL	Weight / Peso	A	B	C	D	E	F	H	L	N	G	A
7/8 in   22.2 mm	11023 lb / 5t	14330 lb / 6.5 t	3.94 lb / 1.79 kg	1.44 in 36.6 mm	1 in 25.4 mm	3.30 in 84 mm	0.88 in 22.4 mm	2.28 in 58 mm	2.08 in 53mm	5.82 in 148 mm	4.01 in 102 mm	0.96 in 24.6 mm	0.25 in 6.35 mm	0.05 in 1.5 mm
1-1/4 in   6.35 mm	22046 lb / 10t	26455 lb / 12 t	11.7lb / 5.31 kg	2.02 in 51.5 mm	1.38 in 35.1 mm	4.68 in 119 mm	1.25 in 31.8 mm	3.24 in 82.5 mm	2.99 in 76 mm	8.26 in 210 mm	5.74 in 146 mm	1.38 in 35.1 mm	0.25 in 6.35 mm	0.05 in 1.5 mm
1-3/4   25 - 19 mm	55115 lb / 25 t	55115 lb / 25 t	33.9 lb / 15.4 kg	2.87 in 73 mm	2 in 51 mm	7 in 178 mm	1.75 in 44.5 mm	5 in 127 mm	4.17 in 106 mm	12.3 in 313 mm	8.85 in 225 mm	2.24 in 57 mm	0.25 in 6.35 mm	0.12 in 3.3 mm
2-1/2   12.7 - 50 mm	110231 lb / 50 t	121254 lb / 55 t	98.3 lb / 44.6 kg	4.13 in 105 mm	2.75 in 70 mm	10.51 in 267 mm	2.61 in 66.5 mm	7.24 in 184 mm	5.70 in 145 mm	17.8 in 453 mm	12.8 in 327 mm	3.12 in 79.5 mm	0.25 in 6.35 mm	
3-1/2   50 - 76 mm	220462 lb / 100 t	264 lb / 120 t	264 lb / 120 kg	5.23 in 133 mm	3.75 in 95.5 mm	14.6 in 372 mm	3.62 in 92 mm	9.01 in 229 mm	7.99 in 203 mm	24.6 in 626 mm	16.4 in 419 mm	4.13 in 105 mm	0.25 in 6.35 mm	

## Unit Weight & Dimensions

<b>Total Unit Weight</b>	13 lbs / 6 Kg
--------------------------	---------------

## Packaging Weight & Dimensions

<b>Package 1 Net Weight</b>	13 lbs / 6 Kg
-----------------------------	---------------

<b>Package 1 Width</b>	1 in / 2.54 cm
------------------------	----------------

<b>Package 1 Gross Weight</b>	13 lbs / 6 Kg
-------------------------------	---------------

<b>Package 1 Height</b>	3 in / 7.62 cm
-------------------------	----------------

<b>Package 1 Length</b>	2 in / 5.08 cm
-------------------------	----------------