



50 Ton In Line Crane Scale Heavy Duty IP68 Water and Shockproof

Key features

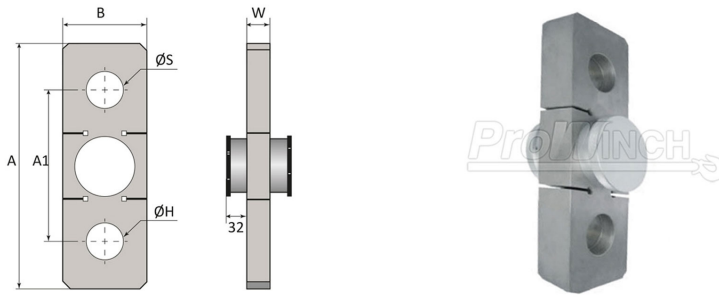
- Impressive Capacity: Supports a maximum load of 50 tons, suitable for heavy-duty applications in various industries.
- IP68 Waterproof and Dustproof: Designed to resist water and dust ingress, ensuring optimal performance in adverse environments.
- Shockproof Construction: Built to endure impacts and vibrations, enhancing durability and extending the lifespan of the scale.
- 3 Year Warranty, Customer Support and Service in the USA

50 Ton In Line Crane Scale Heavy Duty IP68 Water and Shockproof Description

The 50 Ton In Line Crane Scale is engineered for high-capacity lifting and weighing tasks in demanding industrial environments. This heavy-duty scale can handle loads up to 50 tons, making it ideal for heavy machinery, construction, and other rigorous applications. With an IP68 rating, it is fully waterproof and dustproof, ensuring reliability even in the harshest conditions. Designed for accuracy and safety, this crane scale is the perfect solution for professionals who require dependable performance and precise measurements.

Technical Specifications

Rated Load Capacity	110000 lb / 50 ton	Scale Interval	1/2/5/10/20/50 lb/kg
Accuracy Grade	Grade III / n=3000	Receiver Power Supply	Battery 7.4v / 8.4v charger Bateria 7.4v / Cargador 8.4v
Wireless Frequency	430-470 MHz (1000 ft/300m)	Operating Temperature Range	-22° - 158°F / -30° - 70° C
A/D Conversion Rate (per sec)	≥50 times / veces	Warranty	3 Year



Model / Modelo	PWHY5T	PWHY10T	PWHY25T	PWHY50T	PWHY100T
A	9 in / 230 mm	11 in / 280 mm	14.6 in / 370 mm	16.9 in / 430 mm	22.4 in / 570 mm
A1	6.3 in / 160 mm	7.4 in / 188 mm	9 in / 230 mm	10.2 in / 260 mm	5.4 in / 340 mm
B	3 in / 76 mm	3.5 in / 90 mm	0.9 in / 125 mm	5.9 in / 150 mm	8.3 in / 210 mm
W	1.3 in / 34 mm	1.8 mm / 47 mm	2.2 in / 55 mm	2.6 in / 65 mm	4.3 in / 108 mm
ØS	1.1 in / 28 mm	1.6 in / 40 mm	2.1 in / 53 mm	2.9 in / 73 mm	4.0 in / 102 mm
ØH	0.8 in / 21 mm	1.1 in / 28 mm	2.1 in / 53 mm	2.9 in / 73 mm	4.0 in / 102 mm

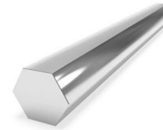
OPTIONAL:



PWHY280
Control remoto simple con visor /
Simple remote control with Display



PWHY680
Control remoto con impresora
y visor / Remote control with printer
and display



PH17-4
Acero inoxidable martensítico
endurecido por precipitación con
adiciones de Cu y Nb/Cb.
Alta resistencia a la corrosión.
Puede ser sumergido en agua por
un largo período de tiempo /
Precipitation hardening martensitic
stainless steel with Cu and Nb/Cb
additions.
High corrosion resistance.
Can be submerged in water for a
long period of time

Nominal Size / Dimensión Nominal	Capacity of Load Cell / Capacidad de la Celda de Carga	WLL	Weight / Peso	A	B	C	D	E	F	H	L	N	G	A
7/8 in 22.2 mm	11023 lb / 5t	14330 lb / 6.5 t	3.94 lb / 1.79 kg	1.44 in 36.6 mm	1 in 25.4 mm	3.30 in 84 mm	0.88 in 22.4 mm	2.28 in 58 mm	2.08 in 53mm	5.82 in 148 mm	4.01 in 102 mm	0.96 in 24.6 mm	0.25 in 6.35 mm	0.05 in 1.5 mm
1-1/4 in - 6.35 mm	22046 lb / 10t	26455 lb / 12 t	11.7lb / 5.31 kg	2.02 in 51.5 mm	1.38 in 35.1 mm	4.68 in 119 mm	1.25 in 31.8 mm	3.24 in 82.5 mm	2.99 in 76 mm	8.26 in 210 mm	5.74 in 146 mm	1.38 in 35.1 mm	0.25 in 6.35 mm	0.05 in 1.5 mm
1-3/4 25 - 19 mm	55115 lb / 25 t	55115 lb / 25 t	33.9 lb / 15.4 kg	2.87 in 73 mm	2 in 51 mm	7 in 178 mm	1.75 in 44.5 mm	5 in 127 mm	4.17 in 106 mm	12.3 in 313 mm	8.85 in 225 mm	2.24 in 57 mm	0.25 in 6.35 mm	0.12 in 3.3 mm
2-1/2 12.7 - 50 mm	110231 lb / 50 t	121254 lb / 55 t	98.3 lb / 44.6 kg	4.13 in 105 mm	2.75 in 70 mm	10.51 in 267 mm	2.61 in 66.5 mm	7.24 in 184 mm	5.70 in 145 mm	17.8 in 453 mm	12.8 in 327 mm	3.12 in 79.5 mm	0.25 in 6.35 mm	
3-1/2 50 - 76 mm	220462 lb / 100 t	264 lb / 120 t	264 lb / 120 kg	5.23 in 133 mm	3.75 in 95.5 mm	14.6 in 372 mm	3.62 in 92 mm	9.01 in 229 mm	7.99 in 203 mm	24.6 in 626 mm	16.4 in 419 mm	4.13 in 105 mm	0.25 in 6.35 mm	

Unit Weight & Dimensions

Total Unit Weight	71 lbs / 33 Kg
--------------------------	----------------

Packaging Weight & Dimensions

Package 1 Net Weight	71 lbs / 32 Kg
-----------------------------	----------------

Package 1 Width	10 in / 25.4 cm
------------------------	-----------------

Package 1 Gross Weight	71 lbs / 32 Kg
-------------------------------	----------------

Package 1 Height	9 in / 22.86 cm
-------------------------	-----------------

Package 1 Length	21 in / 53.34 cm
-------------------------	------------------