

## In Line Crane Scale 10 Ton Heavy Duty IP68 Water and Shockproof

### Key features



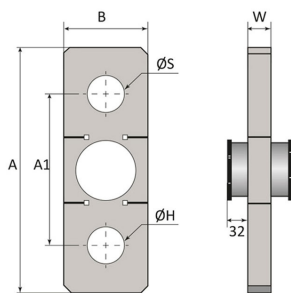
- High Capacity: Supports loads up to 10 tons, suitable for various heavy lifting tasks.
- IP68 Rating: Fully water and dustproof, ensuring reliable operation in wet and dirty environments.
- Shockproof Design: Engineered to withstand impacts and rough handling, enhancing longevity and operational safety.
- 3 Year Warranty, Customer Support and Service in the USA

### In Line Crane Scale 10 Ton Heavy Duty IP68 Water and Shockproof Description

Our In Line Crane Scale provide industry leading weighing features of the previous challenger design to a whole new level with The Highest Quality, most Technologically Advanced Winches in the Industry. Our wide variety of models offer a range of different capacity options as well as optional accessories such as a remote control with display, remote control with printer and display, precipitation hardening martensitic stainless steel with Cu and Nb/Cb additions. High corrosion resistance and can be submerged in water for a long period of time

Technical Specifications

Rated Load Capacity	22000 lb / 10 ton	Scale Interval	1/2/5/10/20/50 lb/kg
Accuracy Grade	Grade III / n=3000	Receiver Power Supply	Battery 7.4v / 8.4v charger   Bateria 7.4v / Cargador 8.4v
Wireless Frequency	430-470 MHz (1000 ft/300m)	Operating Temperature Range	-22° - 158°F / -30° - 70° C
A/D Conversion Rate (per sec)	≥50 times / veces	Warranty	3 Year



Model / Modelo	PWHY5T	PWHY10T	PWHY25T	PWHY50T	PWHY100T
A	9 in / 230 mm	11 in / 280 mm	14.6 in / 370 mm	16.9 in / 430 mm	22.4 in / 570 mm
A1	6.3 in / 160 mm	7.4 in / 188 mm	9 in / 230 mm	10.2 in / 260 mm	5.4 in / 340 mm
B	3 in / 76 mm	3.5 in / 90 mm	0.9 in / 125 mm	5.9 in / 150 mm	8.3 in / 210 mm
W	1.3 in / 34 mm	1.8 mm / 47 mm	2.2 in / 55 mm	2.6 in / 65 mm	4.3 in / 108 mm
ØS	1.1 in / 28 mm	1.6 in / 40 mm	2.1 in / 53 mm	2.9 in / 73 mm	4.0 in / 102 mm
ØH	0.8 in / 21 mm	1.1 in / 28 mm	2.1 in / 53 mm	2.9 in / 73 mm	4.0 in / 102 mm

### OPTIONAL:



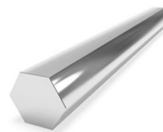
#### PWHY280

Control remoto simple con visor /  
Simple remote control with Display



#### PWHY680

Control remoto con impresora  
y visor / Remote control with printer  
and display



#### PH17-4

Acero inoxidable martensítico  
endurecido por precipitación con  
adiciones de Cu y Nb/Cb.  
Alta resistencia a la corrosión.  
Puede ser sumergido en agua por  
un largo período de tiempo /  
Precipitation hardening martensitic  
stainless steel with Cu and Nb/Cb  
additions.  
High corrosion resistance.  
Can be submerged in water for a  
long period of time

Nominal Size / Dimensión Nominal	Capacity of Load Cell / Capacidad de la Celda de Carga	WLL	Weight / Peso	A	B	C	D	E	F	H	L	N	G	A
7/8 in   22.2 mm	11023 lb / 5t	14330 lb / 6.5 t	3.94 lb / 1.79 kg	1.44 in 36.6 mm	1 in 25.4 mm	3.30 in 84 mm	0.88 in 22.4 mm	2.28 in 58 mm	2.08 in 53 mm	5.82 in 148 mm	4.01 in 102 mm	0.96 in 24.6 mm	0.25 in 6.35 mm	0.05 in 1.5 mm
1-1/4 in   6.35 mm	22046 lb / 10t	26455 lb / 12 t	11.7 lb / 5.31 kg	2.02 in 51.5 mm	1.38 in 35.1 mm	4.68 in 119 mm	1.25 in 31.8 mm	3.24 in 82.5 mm	2.99 in 76 mm	8.26 in 210 mm	5.74 in 146 mm	1.38 in 35.1 mm	0.25 in 6.35 mm	0.05 in 1.5 mm
1-3/4 in   25 - 19 mm	55115 lb / 25 t	55115 lb / 25 t	33.9 lb / 15.4 kg	2.87 in 73 mm	2 in 51 mm	7 in 178 mm	1.75 in 44.5 mm	5 in 127 mm	4.17 in 106 mm	12.3 in 313 mm	8.85 in 225 mm	2.24 in 57 mm	0.25 in 6.35 mm	0.12 in 3.3 mm
2-1/2 in   12.7 - 50 mm	110231 lb / 50 t	121254 lb / 55 t	98.3 lb / 44.6 kg	4.13 in 105 mm	2.75 in 70 mm	10.51 in 267 mm	2.61 in 66.5 mm	7.24 in 184 mm	5.70 in 145 mm	17.8 in 453 mm	12.8 in 327 mm	3.12 in 79.5 mm	0.25 in 6.35 mm	
3-1/2 in   50 - 76 mm	220462 lb / 100 t	264 lb / 120 t	264 lb / 120 kg	5.23 in 133 mm	3.75 in 95.5 mm	14.6 in 372 mm	3.62 in 92 mm	9.01 in 229 mm	7.99 in 203 mm	24.6 in 626 mm	16.4 in 419 mm	4.13 in 105 mm	0.25 in 6.35 mm	

## Unit Weight & Dimensions

<b>Total Unit Weight</b>	17 lbs / 8 Kg
--------------------------	---------------

## Packaging Weight & Dimensions

<b>Package 1 Net Weight</b>	17 lbs / 8 Kg
-----------------------------	---------------

<b>Package 1 Width</b>	9 in / 22.86 cm
------------------------	-----------------

<b>Package 1 Gross Weight</b>	17 lbs / 8 Kg
-------------------------------	---------------

<b>Package 1 Height</b>	5 in / 12.7 cm
-------------------------	----------------

<b>Package 1 Length</b>	11 in / 27.94 cm
-------------------------	------------------