



1.1 Ton Hydraulic Foldable Knuckle Ship Crane

Key features

- 3 Year Warranty, Customer Support and Service in the USA

Copyright: The pictures contained in this site belong to Prowinch LLC and are protected by copyright under national and international law. This information may not be reproduced, adapted or modified without the written consent of Prowinch LLC. The use of these images and texts implies that you should mention Prowinch LLC as owner. By consulting this site or downloading any information you agree to these conditions.

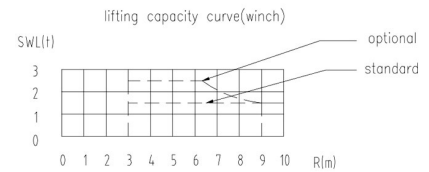
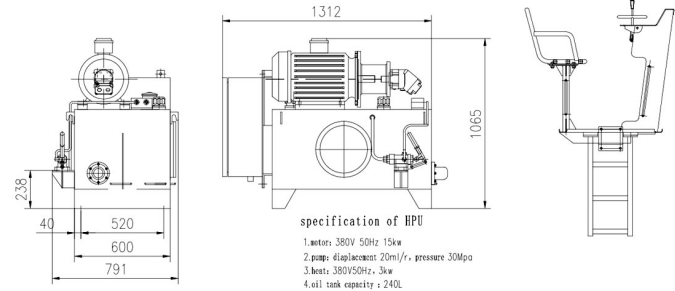
1.1 Ton Hydraulic Foldable Knuckle Ship Crane

Technical Specifications

Warranty	3 Year
----------	--------

Safe Working Load	0.2 T / 12.5 m	
Carga Trabajo Seguro		
Max. Working Radius	12.5m	
Máx. Radio de trabajo		
Min. Working Radius	3.6m	
Min. Radio de trabajo		
Hoisting speed full load	0 ~10 m/min	
Velocidad de izaje plena Carga		
Hoisting height	20m	
Altura de Izaje		
Slewing speed	1 rev/min	
Velocidad de giro		
Slewing angle	360º	
Ángulo de giro		
First luffing time	~50s	
Primer tiempo de Levante Pluma		
Second luffing time	~50s	
Segundo tiempo de Levante Pluma		
Boom extension time	~100s	
Tiempo de extensión de la pluma		
Working Conditions / Condiciones de trabajo	Trim / Pie Longitudinal	≤2º
	Heel / Pie Transversal	≤5º
	Oil flow / Flujo aceite	30L/min
	Temperature / Tempemperatura	-10º ~ +45º C

Position / Posición	Range / Alcance	Capacity / Capacidad
1	3.5 m	1100 kg
2	5 m	750 kg
3	7 m	500 kg
4	9 m	360 kg
5	11 m	250 kg
6	12.5 m	200 kg



NOTE: Wireless remote control is optional.

