



3 Ton Heavy Duty Beam Clamp 3 in - 12.5 in Jaw Capacity

Key features

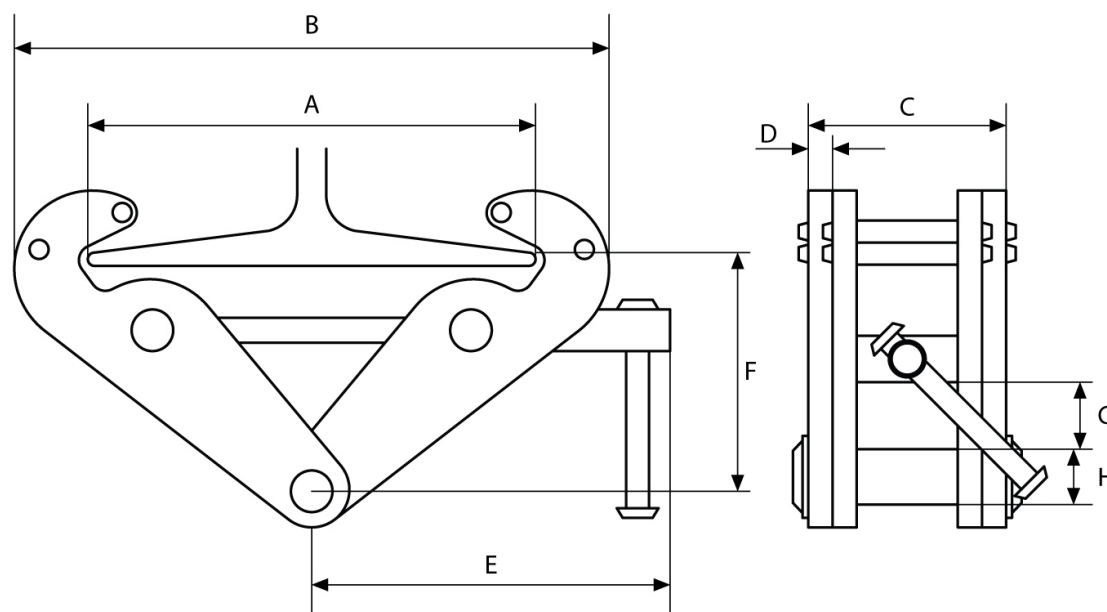
- Adjustable locking screw mechanism allows to quickly change the width for quick interchange from one beam to another.
- Baked powdered paint to reduce exposure to weather and increase lifespan, especially in harsh environments
- Adjustable range: 3 - 12.5 inches beams
- 6600 lbs Load Capacity - Quality Control and Test Certificate included
- 3 Year Warranty, Customer Support and Service in the USA

This **3 ton beam clamp** is intended as support for lifting equipment like a chain hoist, wire rope hoist, or pulley. It can also be used as a beam lifter to move or position I-beams.

Technical Specifications

Rated Load Capacity	3 Ton / 6600 lbs. Test Load: 1.5 Rated Load	Warranty	3 Year
I-Beam Width Range	12.5		

Working Load	I-Beam Width	A Max.	B		C	D	E	F		G	H
			Min.	Max.				Min.	Max.		
2200	3 - 8.5	10.25	7	14	2.5	0.19	8.5	4	6.1	1	0.86
4400	3 - 8.5	10.25	7	14	3	0.23	8.5	4	6.1	1	0.86
6600	3 - 12.5	14	9.25	19.25	4	0.31	10.2	5.5	8.85	1.8	0.94
11000	3 - 12.5	14	9.25	19.25	4.3	0.4	10.2	5.5	8.85	1.8	1.1



Unit Weight & Dimensions

Total Unit Weight	15 lbs / 7 Kg
--------------------------	---------------

Packaging Weight & Dimensions

Package 1 Net Weight	15 lbs / 7 Kg
Package 1 Width	11 in / 27.94 cm
Package 1 Gross Weight	18 lbs / 8 Kg
Package 1 Height	6 in / 15.24 cm
Package 1 Length	22 in / 55.88 cm