



## 1 Ton Heavy Duty Beam Clamp 3 in - 10 in Jaw Capacity

### Key features

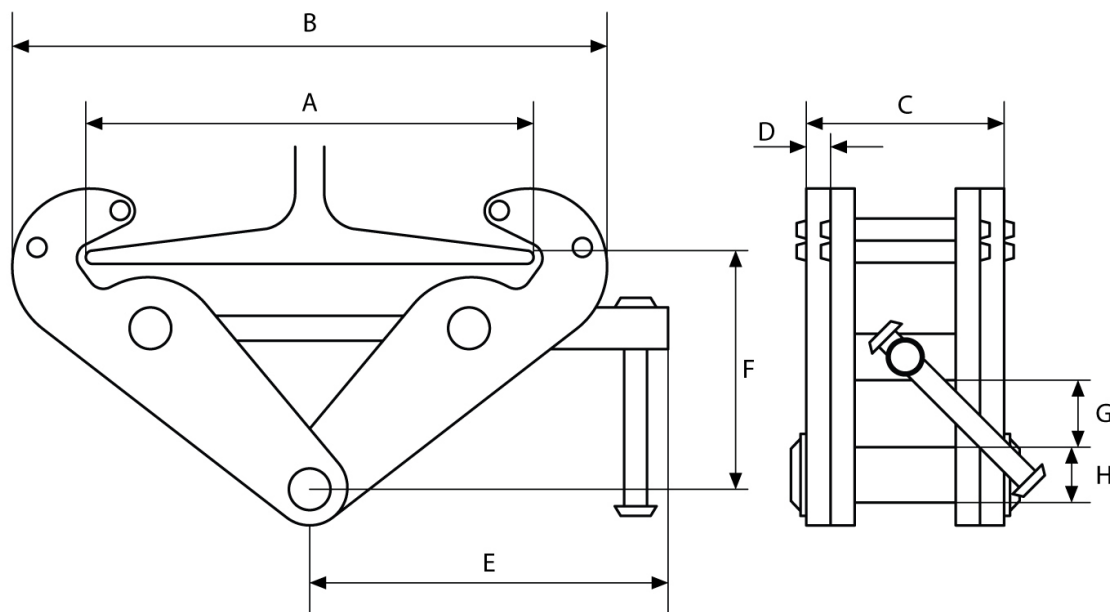
- Adjustable locking screw mechanism allows to quickly change the width for quick interchange from one beam to another.
- Baked powdered paint to reduce exposure to weather and increase lifespan, especially in harsh environments
- Adjustable range: 3 - 10 inches beams
- 2200 lbs Load Capacity - Quality Control and Test Certificate included
- 3 Year Warranty, Customer Support and Service in the USA

This **1 ton beam clamp** is intended as support for lifting equipment like a chain hoist, wire rope hoist, or pulley. It can also be used as a beam lifter to move or position I-beams.

## Technical Specifications

<b>Rated Load Capacity</b>	1 Ton / 2200 lbs.   Test Load: 1.5 Rated Load	<b>Warranty</b>	3 Year
<b>I-Beam Width Range</b>	10 in		

Working Load	I-Beam Width	A Max.	B		C	D	E	F		G	H
			Min.	Max.				Min.	Max.		
2200	3 - 8.5	10.25	7	14	2.5	0.19	8.5	4	6.1	1	0.86
4400	3 - 8.5	10.25	7	14	3	0.23	8.5	4	6.1	1	0.86
6600	3 - 12.5	14	9.25	19.25	4	0.31	10.2	5.5	8.85	1.8	0.94
11000	3 - 12.5	14	9.25	19.25	4.3	0.4	10.2	5.5	8.85	1.8	1.1



## Unit Weight & Dimensions

<b>Total Unit Weight</b>	15 lbs / 7 Kg
--------------------------	---------------

## Packaging Weight & Dimensions

<b>Package 1 Net Weight</b>	15 lbs / 7 Kg
<b>Package 1 Width</b>	7 in / 17.78 cm
<b>Package 1 Gross Weight</b>	18 lbs / 8 Kg
<b>Package 1 Height</b>	5 in / 12.7 cm
<b>Package 1 Length</b>	18 in / 45.72 cm