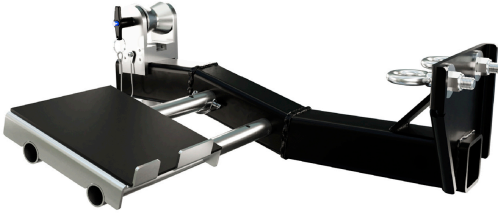




VERTICAL PULL WINCH PCH2000 SUPPORT

Key features



MADE IN CANADA



- Purpose-Built Support: Specifically designed to provide stable support for the PCH2000 winch during vertical pulling operations.
- Heavy-Duty Construction: Made from robust materials to handle high loads and ensure durability under demanding conditions.
- Adjustable Fit: Features adjustable components to accommodate different heights and load requirements for versatile use.
- 3 Year Warranty, Customer Support and Service in the USA

Winch Description

The Vertical Pull Winch PCH2000 Support is designed to provide stable and secure support for the PCH2000 winch during vertical lifting operations. Engineered for durability and precision, this support ensures optimal alignment and load distribution, enhancing the winch's performance and safety. Ideal for heavy-duty applications requiring reliable support in vertical pulling tasks.

Technical Specifications

Warranty	3 Year
----------	--------

Unit Weight & Dimensions

Total Unit Weight	26 lbs / 12 Kg
-------------------	----------------

Packaging Weight & Dimensions

Package 1 Net Weight	26 lbs / 12 Kg
----------------------	----------------

Package 1 Width	10 in / 25.4 cm
-----------------	-----------------

Package 1 Gross Weight	28 lbs / 13 Kg
------------------------	----------------

Package 1 Height	24 in / 60.96 cm
------------------	------------------

Package 1 Length	11 in / 27.94 cm
------------------	------------------