



## Retractable Cable Reel - 20 meters reach - 4 wires Sections 3 x 6mm<sup>2</sup> 1 and 4mm<sup>2</sup>

### Key features

- Reach: 20 meters of retractable cable, providing flexibility for various applications.
- Wire Configuration: Four wire sections—three 6mm<sup>2</sup> wires for high-power applications and one 4mm<sup>2</sup> wire for additional connections.
- Durable Construction: Built with high-quality materials to withstand heavy use and provide long-lasting performance.

### Retractable Cable Reel Description

The Retractable Cable Reel offers a convenient solution for managing electrical connections, featuring a 20-meter reach. Designed with four wire sections (three 6mm<sup>2</sup> and one 4mm<sup>2</sup>), this durable cable reel ensures reliable power distribution while keeping your workspace organized and safe.

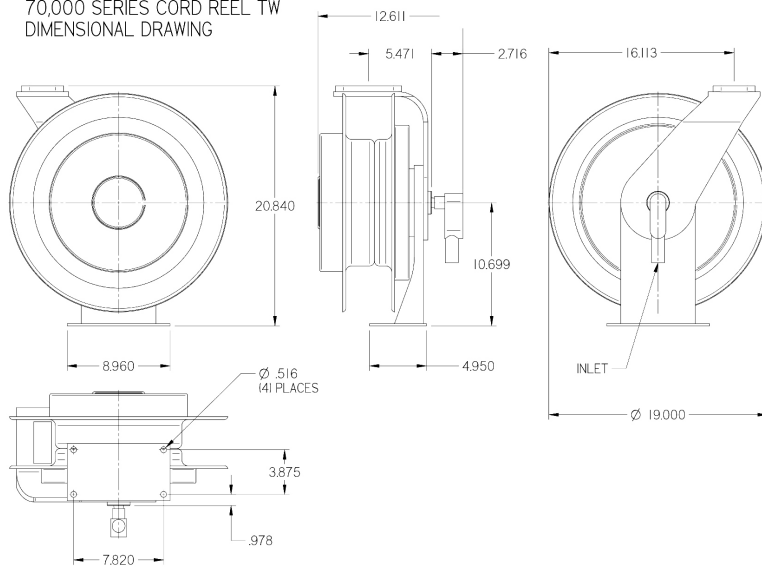
## Technical Specifications

Product structure:	
Conductor material 1	Bare twisted copper
Structure 1 (mm)	85/0.29
Nominal cross-sectional area 1 (mm <sup>2</sup> )	6.0
Insulation Material 1	PVC
Insulation Outer Diameter 1(mm)	4.8±0.15
Average insulation thickness 1(mm)	≥0.8
Minimum Insulation Thickness 1(mm)	≥0.62
Conductor material 2	Bare twisted copper
Structure 2(mm)	56/0.29
Nominal cross-sectional area 2 (mm <sup>2</sup> )	4.0
Insulation Material 2	PVC
Insulation Outer Diameter 2(mm)	4.2±0.15
Average insulation thickness 2(mm)	≥0.8
Minimum Insulation Thickness 2(mm)	≥0.62
Sheath Material	PVC
Outer diameter of sheath(mm)	14.5±0.3
Average thickness of sheath(mm)	≥1.7
Minimum thickness of sheath(mm)	≥1.35



Electrical and physical properties		
Rated voltage (V)	300/500	
Rated temperature (°C)	70	
Spark test (KV)	6	
Voltage withstanding (KV/5MIN)	2	
Insulation resistance 70°C (MΩ.KM)	1) ≥ 0.008 2) ≥ 0.008	
Conductor resistance 20°C (Ω/KM)	1) ≤3.3 2) ≥ 4.95	
Testing object	Insulation	Sheath
Testing material	PVC	PVC
Combustion test	/	/
Tensile strength before aging (N/MM <sup>2</sup> )	≥10.0	≥10.0
Pre-aging elongation (%)	≥150	≥125
Aging Conditions (°C/H)	80×168	80×168
Maximum Change Rate of Tensile Strength after Aging(%)	±20	±20
Maximum change rate of elongation after aging (%)	±20	±20

70,000 SERIES CORD REEL TW  
DIMENSIONAL DRAWING



## Unit Weight & Dimensions

<b>Total Unit Weight</b>	18 lbs / 9 Kg
--------------------------	---------------

## Packaging Weight & Dimensions

<b>Package 1 Net Weight</b>	18 lbs / 8 Kg
-----------------------------	---------------

<b>Package 1 Width</b>	15 in / 38.1 cm
------------------------	-----------------

<b>Package 1 Gross Weight</b>	19 lbs / 9 Kg
-------------------------------	---------------

<b>Package 1 Height</b>	8 in / 20.32 cm
-------------------------	-----------------

<b>Package 1 Length</b>	15 in / 38.1 cm
-------------------------	-----------------